

For Research Use Only

CBX1 Polyclonal antibody

Catalog Number: 31108-1-AP



Basic Information

| | | |
|---|---|--|
| Catalog Number: 31108-1-AP | GenBank Accession Number: BC002609 | Purification Method: Antigen affinity Purification |
| Size: 150ul , Concentration: 400 µg/ml by Nanodrop; | GeneID (NCBI): 10951 | Recommended Dilutions: WB 1:1000-1:4000 |
| Source: Rabbit | Full Name: chromobox homolog 1 (HP1 beta homolog Drosophila) | |
| Isotype: IgG | Calculated MW: 27 kDa | |
| Immunogen Catalog Number: AG34901 | Observed MW: 21-27 kDa | |

Applications

| | |
|---|---|
| Tested Applications: WB, ELISA | Positive Controls: WB : A431 cells, HEK-293 cells, MCF-7 cells, NIH/3T3 cells |
| Species Specificity: Human, mouse | |

Background Information

CBX1 (chromobox 1), also known as CBX. It is expected to be located in nucleus, the protein is expressed in all adult and embryonic tissues. It is a member of the heterochromatin protein family. CBX1 is enriched in the heterochromatin and associated with centromeres. The protein has a single N-terminal chromodomain which can bind to histone proteins via methylated lysine residues, and a C-terminal chromo shadow-domain (CSD) which is responsible for the homodimerization and interaction with a number of chromatin-associated nonhistone proteins. It may play an important role in the epigenetic control of chromatin structure and gene expression. The calculated molecular weight of CBX1 is 21 kDa, and there is phosphorylation modification of this protein.

Storage

Storage:
Store at -20°C. Stable for one year after shipment.
Storage Buffer:
PBS with 0.02% sodium azide and 50% glycerol pH 7.3.
Aliquoting is unnecessary for -20°C storage

*** 20ul sizes contain 0.1% BSA

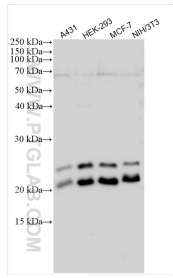
For technical support and original validation data for this product please contact:

T: 1 (888) 4PTGLAB (1-888-478-4522) (toll free in USA), or 1(312) 455-8498 (outside USA)

E: proteintech@ptglab.com
W: ptglab.com

This product is exclusively available under Proteintech Group brand and is not available to purchase from any other manufacturer.

Selected Validation Data



Various lysates were subjected to SDS PAGE followed by western blot with 31108-1-AP (CBX1 antibody) at dilution of 1:2000 incubated at room temperature for 1.5 hours.