

For Research Use Only

CBX1 Polyclonal antibody, PBS Only

Catalog Number: 31108-1-PBS

Featured Product



Basic Information

Catalog Number:

31108-1-PBS

Size:

100ug , Concentration: 1 mg/ml by Nanodrop;

Source:

Rabbit

Isotype:

IgG

Immunogen Catalog Number:

AG34901

GenBank Accession Number:

BC002609

GeneID (NCBI):

10951

UNIPROT ID:

P83916

Full Name:

chromobox homolog 1 (HP1 beta homolog Drosophila)

Calculated MW:

27 kDa

Observed MW:

21-27 kDa

Purification Method:

Antigen affinity Purification

Applications

Tested Applications:

WB, Indirect ELISA

Species Specificity:

human, mouse

Background Information

CBX1 (chromobox 1), also known as CBX. It is expected to be located in nucleus, the protein is expressed in all adult and embryonic tissues. It is a member of the heterochromatin protein family. CBX1 is enriched in the heterochromatin and associated with centromeres. The protein has a single N-terminal chromodomain which can bind to histone proteins via methylated lysine residues, and a C-terminal chromo shadow-domain (CSD) which is responsible for the homodimerization and interaction with a number of chromatin-associated nonhistone proteins. It may play an important role in the epigenetic control of chromatin structure and gene expression. The calculated molecular weight of CBX1 is 21 kDa.

Storage

Storage:

Store at -80°C.

Storage Buffer:

PBS only, pH7.3

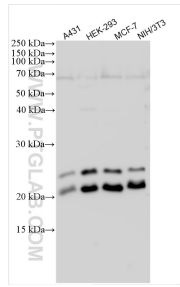
For technical support and original validation data for this product please contact:

T: 1 (888) 4PTGLAB (1-888-478-4522) (toll free in USA), or 1(312) 455-8498 (outside USA)

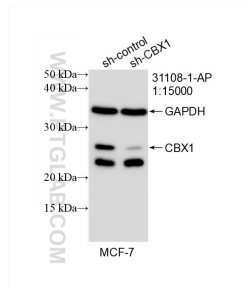
E: proteintech@ptglab.com
W: ptglab.com

This product is exclusively available under Proteintech Group brand and is not available to purchase from any other manufacturer.

Selected Validation Data



Various lysates were subjected to SDS PAGE followed by western blot with 31108-1-AP (CBX1 antibody) at dilution of 1:2000 incubated at room temperature for 1.5 hours. This data was developed using the same antibody clone with 31108-1-PBS in a different storage buffer formulation.



WB result of CBX1 antibody (31108-1-AP; 1:15000; incubated at room temperature for 1.5 hours) with sh-Control and sh-CBX1 transfected MCF-7 cells. This data was developed using the same antibody clone with 31108-1-PBS in a different storage buffer formulation.