

For Research Use Only

COMMD9 Polyclonal antibody, PBS Only

Catalog Number: 31112-1-PBS

Featured Product



Basic Information

Catalog Number:

31112-1-PBS

Size:

100ug, Concentration: 1 mg/ml by Nanodrop;

Source:

Rabbit

Isotype:

IgG

Immunogen Catalog Number:

AG35078

GenBank Accession Number:

BC010892

GeneID (NCBI):

29099

UNIPROT ID:

Q9P000

Full Name:

COMM domain containing 9

Observed MW:

23 kDa

Purification Method:

Antigen affinity Purification

Applications

Tested Applications:

WB, Indirect ELISA

Species Specificity:

human

Background Information

COMMD9, also known as HSPC166, is a member of the COMMD family of proteins. The COMMD protein family is an evolutionarily conserved gene family that plays a role in a number of critical biological processes, including inflammation, copper homeostasis, sodium balance, endosomal sorting and cancer. COMMD9 has been shown to participate in TFDP1/E2F1 activation and to play a critical role in non-small cell lung cancer (PMID: 27871936)

Storage

Storage:

Store at -80°C.

Storage Buffer:

PBS only, pH7.3

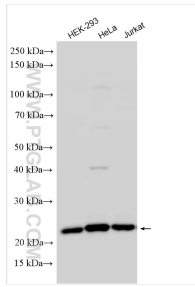
For technical support and original validation data for this product please contact:

T: 1 (888) 4PTGLAB (1-888-478-4522) (toll free in USA), or 1(312) 455-8498 (outside USA)

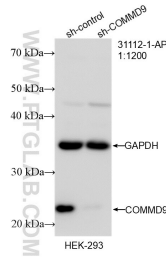
E: proteintech@ptglab.com
W: ptglab.com

This product is exclusively available under Proteintech Group brand and is not available to purchase from any other manufacturer.

Selected Validation Data



Various lysates were subjected to SDS PAGE followed by western blot with 31112-1-AP (COMMD9 antibody) at dilution of 1:3000 incubated at room temperature for 1.5 hours. This data was developed using the same antibody clone with 31112-1-PBS in a different storage buffer formulation.



WB result of COMMD9 antibody (31112-1-AP; 1:1200; incubated at room temperature for 1.5 hours) with sh-Control and sh-COMMD9 transfected HEK-293 cells. This data was developed using the same antibody clone with 31112-1-PBS in a different storage buffer formulation.