

# NRG1, isoform Beta1 Polyclonal antibody

Catalog Number: 31147-1-AP

## Basic Information

Catalog Number:	GenBank Accession Number:	Purification Method:
31147-1-AP	BC007675	Antigen affinity purification
Size:	GeneID (NCBI):	Recommended Dilutions:
150ul , Concentration: 450 ug/ml by Nanodrop;	3084	WB 1:500-1:2000
Source:	UNIPROT ID:	IHC 1:50-1:500
Rabbit	Q02297	IF/ICC 1:200-1:800
Isotype:	Full Name:	
IgG	neuregulin 1	
Immunogen Catalog Number:	Calculated MW:	
AG35188	70 kDa	
	Observed MW:	
	71 kDa	

## Applications

Tested Applications:  
WB, IHC, IF/ICC, ELISA

Species Specificity:  
Human, Mouse, Rat

**Note-IHC: suggested antigen retrieval with TE buffer pH 9.0; (\*) Alternatively, antigen retrieval may be performed with citrate buffer pH 6.0**

Positive Controls:

WB : HeLa cells, mouse brain tissue, rat brain tissue

IHC : mouse cerebellum tissue,

IF/ICC : MCF-7 cells,

## Background Information

Neuregulin 1 (NRG1) is a trophic factor that has been implicated in neural development, neurotransmission, and synaptic plasticity. NRG1 has multiple isoforms that are generated by usage of different promoters and alternative splicing of a single gene. NRG1 and its receptor ErbB tyrosine kinase are expressed not only in the developing nervous system, but also in the adult brain. The immunogen of this antibody is against NRG1 isoform Beta1.

## Storage

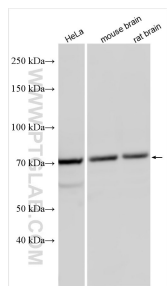
Storage:  
Store at -20°C. Stable for one year after shipment.  
Storage Buffer:  
PBS with 0.02% sodium azide and 50% glycerol pH 7.3.  
Aliquoting is unnecessary for -20°C storage

\*\*\* 20ul sizes contain 0.1% BSA

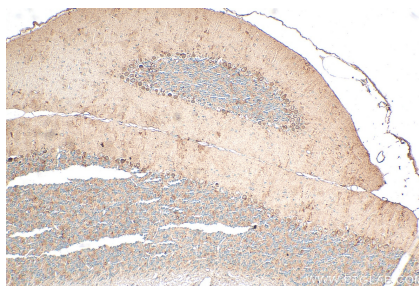
For technical support and original validation data for this product please contact:  
T: 1 (888) 4PTGLAB (1-888-478-4522) (toll free in USA), or 1(312) 455-8498 (outside USA)  
E: proteintech@ptglab.com  
W: ptglab.com

This product is exclusively available under Proteintech Group brand and is not available to purchase from any other manufacturer.

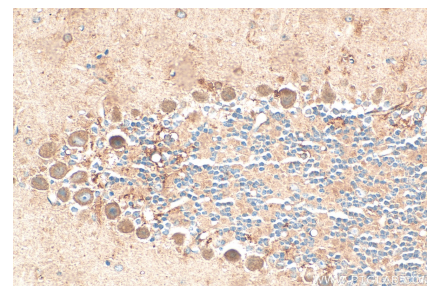
## Selected Validation Data



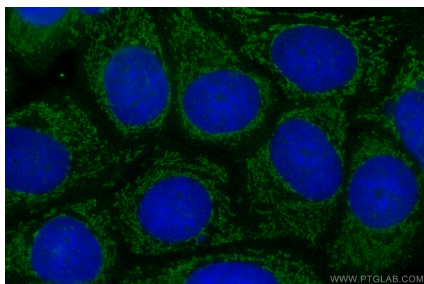
Various lysates were subjected to SDS PAGE followed by western blot with 31147-1-AP (NRG1, isoform Beta1 antibody) at dilution of 1:1000 incubated at room temperature for 1.5 hours.



Immunohistochemical analysis of paraffin-embedded mouse cerebellum tissue slide using 31147-1-AP (NRG1, isoform Beta1 antibody) at dilution of 1:200 (under 10x lens). Heat mediated antigen retrieval with Tris-EDTA buffer (pH 9.0).



Immunohistochemical analysis of paraffin-embedded mouse cerebellum tissue slide using 31147-1-AP (NRG1, isoform Beta1 antibody) at dilution of 1:200 (under 40x lens). Heat mediated antigen retrieval with Tris-EDTA buffer (pH 9.0).



Immunofluorescent analysis of (-20°C Methanol) fixed MCF-7 cells using NRG1, isoform Beta1 antibody (31147-1-AP) at dilution of 1:400 and CoraLite®488-Conjugated Goat Anti-Rabbit IgG(H+L).