

For Research Use Only

C18orf24 Polyclonal antibody

Catalog Number: 31161-1-AP



Basic Information

Catalog Number: 31161-1-AP	GenBank Accession Number: BC015706	Purification Method: Antigen affinity Purification
Size: 150ul , Concentration: 550 ug/ml by Nanodrop;	GeneID (NCBI): 220134	Recommended Dilutions: WB 1:1000-1:4000
Source: Rabbit	UNIPROT ID: Q96BD8	
Isotype: IgG	Full Name: chromosome 18 open reading frame 24	
Immunogen Catalog Number: AG34772	Observed MW: 32 kDa	

Applications

Tested Applications: WB, ELISA	Positive Controls: WB : HeLa cells, HuH-7 cells, U2OS cells, mouse pancreas tissue, rat pancreas tissue
Species Specificity: Human, mouse, rat	

Background Information

C18orf24 (Spindle and kinetochore-associated protein 1, SKA1) is involved in chromosome congression and mitosis. It is upregulated and oncogenic in several human cancers (PMID: 31827398). In the human genome, SKA1, SKA2, and SKA3 constitute the SKA complex; this is necessary to maintain spindle microtubule attachment to kinetochores during mitosis (PMID: 36397719).

Storage

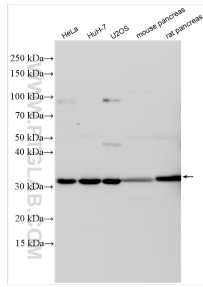
Storage:
Store at -20°C. Stable for one year after shipment.
Storage Buffer:
PBS with 0.02% sodium azide and 50% glycerol pH 7.3.
Aliquoting is unnecessary for -20°C storage

*** 20ul sizes contain 0.1% BSA

For technical support and original validation data for this product please contact:
T: 1 (888) 4PTGLAB (1-888-478-4522) (toll free in USA), or 1(312) 455-8498 (outside USA)
E: proteintech@ptglab.com
W: ptglab.com

This product is exclusively available under Proteintech Group brand and is not available to purchase from any other manufacturer.

Selected Validation Data



Various lysates were subjected to SDS PAGE followed by western blot with 31161-1-AP (C18orf24 antibody) at dilution of 1:2000 incubated at room temperature for 1.5 hours.