

For Research Use Only

KLF2 Polyclonal antibody

Catalog Number: 31170-1-AP



Basic Information

Catalog Number:

31170-1-AP

Size:

150ul , Concentration: 300 ug/ml by Nanodrop;

Source:

Rabbit

Isotype:

IgG

Immunogen Catalog Number:

AG33962

GenBank Accession Number:

NM_016270

GeneID (NCBI):

10365

UNIPROT ID:

Q9Y5W3

Full Name:

Kruppel-like factor 2 (lung)

Calculated MW:

37KD

Observed MW:

37-40 kDa

Purification Method:

Antigen affinity Purification

Recommended Dilutions:

WB 1:500-1:2000

Applications

Tested Applications:

WB, ELISA

Species Specificity:

human, mouse

Positive Controls:

WB : bEnd.3 cells,

Storage

Storage:

Store at -20°C. Stable for one year after shipment.

Storage Buffer:

PBS with 0.02% sodium azide and 50% glycerol pH 7.3.

Aliquoting is unnecessary for -20°C storage

*** 20ul sizes contain 0.1% BSA

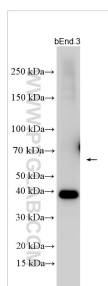
For technical support and original validation data for this product please contact:

T: 1 (888) 4PTGLAB (1-888-478-4522) (toll free in USA), or 1(312) 455-8498 (outside USA)

E: proteintech@ptglab.com
W: ptglab.com

This product is exclusively available under Proteintech Group brand and is not available to purchase from any other manufacturer.

Selected Validation Data



Various lysates were subjected to SDS PAGE followed by western blot with 31170-1-AP (KLF2 antibody) at dilution of 1:1000 incubated at room temperature for 1.5 hours.