

For Research Use Only

METTL8 Polyclonal antibody

Catalog Number: 31173-1-AP



Basic Information

Catalog Number:

31173-1-AP

Size:

150ul , Concentration: 600 ug/ml by Nanodrop;

Source:

Rabbit

Isotype:

IgG

Immunogen Catalog Number:

AG34222

GenBank Accession Number:

BC025250

GeneID (NCBI):

79828

UNIPROT ID:

Q9H825

Full Name:

methyltransferase like 8

Calculated MW:

33 kDa

Observed MW:

33~40 kDa

Purification Method:

Antigen affinity Purification

Recommended Dilutions:

WB 1:500-1:3000

IF/ICC 1:200-1:800

Applications

Tested Applications:

WB, IF/ICC, ELISA

Species Specificity:

human

Positive Controls:

WB : COLO 205 cells, HCT 116 cells, LoVo cells, SW480 cells

IF/ICC : A431 cells,

Background Information

METTL8 (methyltransferase-like protein 8) is an m3C methyltransferase that is best known for its mitochondrial role in installing m3C32 on mt-tRNAThr/Ser(UCN). METTL8 has proved to be a transcriptional target of STAT3 that mediates STAT3's functions in mESCs (PMID: 29706498). METTL8 has multiple splicing isoforms and can undergo sumoylation and associate with nuclear RNA-binding proteins to regulate R-loop formation on ribosomal DNA gene (presumably via its methyltransferase activity on m3C) (PMID: 38744809).

Storage

Storage:

Store at -20°C. Stable for one year after shipment.

Storage Buffer:

PBS with 0.02% sodium azide and 50% glycerol, pH7.3

Aliquoting is unnecessary for -20°C storage

*** 20ul sizes contain 0.1% BSA

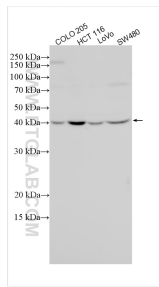
For technical support and original validation data for this product please contact:

T: 1 (888) 4PTGLAB (1-888-478-4522) (toll free in USA), or 1(312) 455-8498 (outside USA)

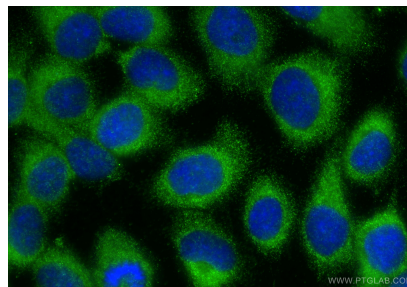
E: proteintech@ptglab.com
W: ptglab.com

This product is exclusively available under Proteintech Group brand and is not available to purchase from any other manufacturer.

Selected Validation Data



Various lysates were subjected to SDS PAGE followed by western blot with 31173-1-AP (METTL8 antibody) at dilution of 1:1500 incubated at room temperature for 1.5 hours.



Immunofluorescent analysis of (-20°C Methanol) fixed A431 cells using METTL8 antibody (31173-1-AP) at dilution of 1:400 and CoraLite® 488-Conjugated Goat Anti-Rabbit IgG(H+L) (SA00013-2).