

For Research Use Only

# METTL8 Polyclonal antibody, PBS Only

Catalog Number: 31173-1-PBS



## Basic Information

<b>Catalog Number:</b> 31173-1-PBS	<b>GenBank Accession Number:</b> BC025250	<b>Purification Method:</b> Antigen affinity Purification
<b>Size:</b> 100ug, Concentration: 1 mg/ml by Nanodrop;	<b>GeneID (NCBI):</b> 79828	
<b>Source:</b> Rabbit	<b>UNIPROT ID:</b> Q9H825	
<b>Isotype:</b> IgG	<b>Full Name:</b> methyltransferase like 8	
<b>Immunogen Catalog Number:</b> AG34222	<b>Calculated MW:</b> 33 kDa	
	<b>Observed MW:</b> 33~40 kDa	

## Applications

**Tested Applications:**  
WB, IF/ICC, Indirect ELISA

**Species Specificity:**  
human

## Background Information

METTL8 (methyltransferase-like protein 8) is an m3C methyltransferase that is best known for its mitochondrial role in installing m3C32 on mt-tRNAThr/Ser(UCN). METTL8 has proved to be a transcriptional target of STAT3 that mediates STAT3's functions in mESCs (PMID: 29706498). METTL8 has multiple splicing isoforms and can undergo sumoylation and associate with nuclear RNA-binding proteins to regulate R-loop formation on ribosomal DNA gene (presumably via its methyltransferase activity on m3C) (PMID: 38744809).

## Storage

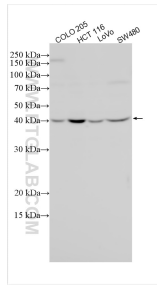
**Storage:**  
Store at -80°C.

**Storage Buffer:**  
PBS only, pH7.3

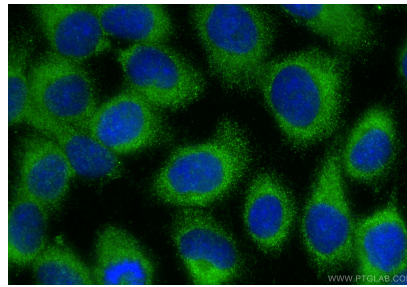
For technical support and original validation data for this product please contact:  
T: 1 (888) 4PTGLAB (1-888-478-4522) (toll free in USA), or 1(312) 455-8498 (outside USA)      E: proteintech@ptglab.com  
W: ptglab.com

This product is exclusively available under Proteintech Group brand and is not available to purchase from any other manufacturer.

## Selected Validation Data



Various lysates were subjected to SDS PAGE followed by western blot with 31173-1-AP (METTL8 antibody) at dilution of 1:1500 incubated at room temperature for 1.5 hours. This data was developed using the same antibody clone with 31173-1-PBS in a different storage buffer formulation.



Immunofluorescent analysis of (-20°C Methanol) fixed A431 cells using METTL8 antibody (31173-1-AP) at dilution of 1:400 and CoraLite® 488-Conjugated Goat Anti-Rabbit IgG(H+L) (SA00013-2). This data was developed using the same antibody clone with 31173-1-PBS in a different storage buffer formulation.