

For Research Use Only

# SLC2A7 Polyclonal antibody, PBS Only

Catalog Number: 31182-1-PBS



## Basic Information

**Catalog Number:**

31182-1-PBS

**Size:**

100ug, Concentration: 1 mg/ml by Nanodrop;

**Source:**

Rabbit

**Isotype:**

IgG

**Immunogen Catalog Number:**

AG34515

**GenBank Accession Number:**

NM\_207420

**GeneID (NCBI):**

155184

**UNIPROT ID:**

Q6PXP3

**Full Name:**

solute carrier family 2 (facilitated glucose transporter), member 7

**Calculated MW:**

512 aa, 56 kDa

**Purification Method:**

Antigen affinity Purification

## Applications

**Tested Applications:**

IHC, Indirect ELISA

**Species Specificity:**

human, mouse

## Background Information

SLC2A7 (solute carrier family 2 member 7, also known as GLUT7) belongs to a family of transporters that catalyze the uptake of sugars through facilitated diffusion.

## Storage

**Storage:**

Store at -80°C.

**Storage Buffer:**

PBS Only

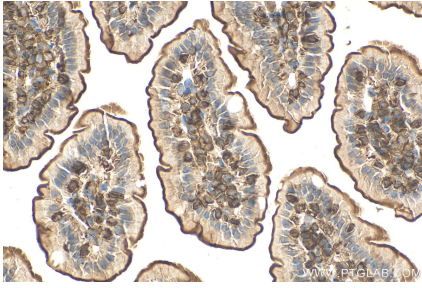
For technical support and original validation data for this product please contact:

T: 1 (888) 4PTGLAB (1-888-478-4522) (toll free in USA), or 1(312) 455-8498 (outside USA)

E: [proteintech@ptglab.com](mailto:proteintech@ptglab.com)  
W: [ptglab.com](http://ptglab.com)

**This product is exclusively available under Proteintech Group brand and is not available to purchase from any other manufacturer.**

## Selected Validation Data



Immunohistochemical analysis of paraffin-embedded mouse small intestine tissue slide using 31182-1-AP (SLC2A7 antibody) at dilution of 1:200 (under 40x lens). Heat mediated antigen retrieval with Tris-EDTA buffer (pH 9.0). This data was developed using the same antibody clone with 31182-1-PBS in a different storage buffer formulation.