

For Research Use Only

COBLL1 Polyclonal antibody, PBS Only

Catalog Number: 31191-1-PBS



Basic Information

Catalog Number: 31191-1-PBS	GenBank Accession Number: BC071588	Purification Method: Antigen affinity Purification
Size: 100ug , Concentration: 1 mg/ml by Nanodrop;	GeneID (NCBI): 22837	
Source: Rabbit	UNIPROT ID: Q53SF7	
Isotype: IgG	Full Name: COBL-like 1	
Immunogen Catalog Number: AG34853	Observed MW: 160 kDa	

Applications

Tested Applications:
WB, IHC, IF/ICC, Indirect ELISA

Species Specificity:
human, mouse

Background Information

Cordon-blue protein-like 1 (COBLL1), a negative regulator of apoptosis, is associated with lower insulin resistance. COBLL1 is involved in the cancer cell morphogenesis to a neuron-like cell shape observed in the CRPC model cells, promoting cell growth and migration (PMID: 29686105, 29686105). COBLL1 is highly expressed in most human tissues including lung, liver, kidney, pancreas, ovary, spinal cord and brain.

Storage

Storage:
Store at -80°C.

Storage Buffer:
PBS only, pH7.3

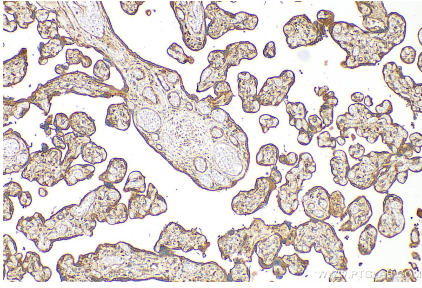
For technical support and original validation data for this product please contact:

T: 1 (888) 4PTGLAB (1-888-478-4522) (toll free in USA), or 1(312) 455-8498 (outside USA)

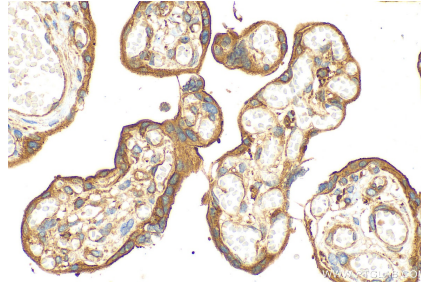
E: proteintech@ptglab.com
W: ptglab.com

This product is exclusively available under Proteintech Group brand and is not available to purchase from any other manufacturer.

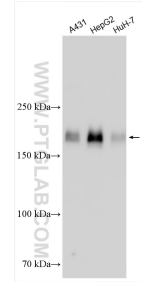
Selected Validation Data



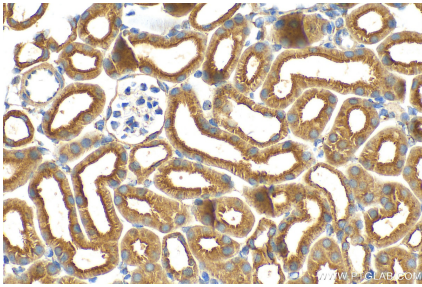
Immunohistochemical analysis of paraffin-embedded human placenta tissue slide using 31191-1-AP (COBLL1 antibody) at dilution of 1:200 (under 10x lens). Heat mediated antigen retrieval with Tris-EDTA buffer (pH 9.0). This data was developed using the same antibody clone with 31191-1-PBS in a different storage buffer formulation.



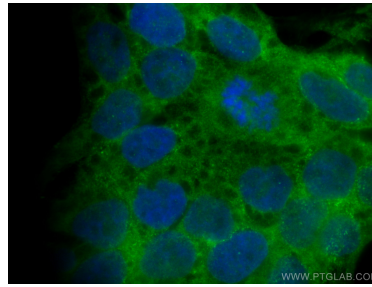
Immunohistochemical analysis of paraffin-embedded human placenta tissue slide using 31191-1-AP (COBLL1 antibody) at dilution of 1:200 (under 40x lens). Heat mediated antigen retrieval with Tris-EDTA buffer (pH 9.0). This data was developed using the same antibody clone with 31191-1-PBS in a different storage buffer formulation.



Various lysates were subjected to Tris-Acetate gel system followed by western blot with 31191-1-AP (COBLL1 antibody) at dilution of 1:2500 incubated at room temperature for 1.5 hours. This data was developed using the same antibody clone with 31191-1-PBS in a different storage buffer formulation.



Immunohistochemical analysis of paraffin-embedded mouse kidney tissue slide using 31191-1-AP (COBLL1 antibody) at dilution of 1:200 (under 40x lens). Heat mediated antigen retrieval with Tris-EDTA buffer (pH 9.0). This data was developed using the same antibody clone with 31191-1-PBS in a different storage buffer formulation.



Immunofluorescent analysis of (4% PFA) fixed HaCaT cells using COBLL1 antibody (31191-1-AP) at dilution of 1:400 and Multi-rAb Coralite® Plus 488-Goat Anti-Rabbit Recombinant Secondary Antibody (H+L) (RGAR002). This data was developed using the same antibody clone with 31191-1-PBS in a different storage buffer formulation.