

For Research Use Only

# Keap1 Polyclonal antibody

Catalog Number: 31197-1-AP



## Basic Information

### Catalog Number:

31197-1-AP

### Size:

150ul , Concentration: 400 ug/ml by Nanodrop;

### Source:

Rabbit

### Isotype:

IgG

### Immunogen Catalog Number:

AG35035

### GenBank Accession Number:

NM\_001110305

### GeneID (NCBI):

50868

### UNIPROT ID:

Q9Z2X8

### Full Name:

kelch-like ECH-associated protein 1

### Calculated MW:

70 kDa

### Observed MW:

60-64 kDa

### Purification Method:

Antigen affinity Purification

### Recommended Dilutions:

WB: 1:2000-1:12000

## Applications

### Tested Applications:

WB, ELISA

### Species Specificity:

mouse, rat

### Positive Controls:

WB : C2C12 cells,

## Background Information

KEAP1 (Kelch-like ECH-associated protein 1) is a critical regulatory protein that plays a pivotal role in the cellular response to oxidative stress. It is best known for its function as a negative regulator of the Nrf2 (NF-E2-related factor 2) pathway, which is essential for maintaining cellular redox homeostasis.

## Storage

### Storage:

Store at -20°C. Stable for one year after shipment.

### Storage Buffer:

PBS with 0.02% sodium azide and 50% glycerol, pH7.3

Aliquoting is unnecessary for -20°C storage

\*\*\* 20ul sizes contain 0.1% BSA

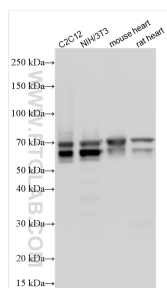
For technical support and original validation data for this product please contact:

T: 1 (888) 4PTGLAB (1-888-478-4522) (toll free in USA), or 1(312) 455-8498 (outside USA)

E: [proteintech@ptglab.com](mailto:proteintech@ptglab.com)  
W: [ptglab.com](http://ptglab.com)

This product is exclusively available under Proteintech Group brand and is not available to purchase from any other manufacturer.

## Selected Validation Data



Various lysates were subjected to SDS PAGE followed by western blot with 31197-1-AP (Keap1 antibody) at dilution of 1:6000 incubated at room temperature for 1.5 hours.