

For Research Use Only

PSMG4 Polyclonal antibody, PBS Only

Catalog Number:31201-1-PBS



Basic Information

Catalog Number:

31201-1-PBS

Size:

100ug , Concentration: 1 mg/ml by Nanodrop;

Source:

Rabbit

Isotype:

IgG

Immunogen Catalog Number:

AG35222

GenBank Accession Number:

NM_001128591.1

GeneID (NCBI):

389362

UNIPROT ID:

Q5J554

Full Name:

proteasome (prosome, macropain) assembly chaperone 4

Calculated MW:

14 kDa

Observed MW:

13 kDa

Purification Method:

Antigen affinity Purification

Applications

Tested Applications:

WB, IF/ICC, Indirect ELISA

Species Specificity:

human

Background Information

PSMG4 (Proteasome assembly chaperone 4), also known as C6orf86. It is expected to be located in the nucleus and cytoplasm, which interacts with PSMG3 and associates with alpha subunits of the 20S proteasome. The molecular weight of PSMG4 is 13 kDa.

Storage

Storage:

Store at -80°C.

Storage Buffer:

PBS only, pH7.3

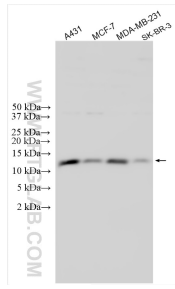
For technical support and original validation data for this product please contact:

T: 1 (888) 4PTGLAB (1-888-478-4522) (toll free in USA), or 1(312) 455-8498 (outside USA)

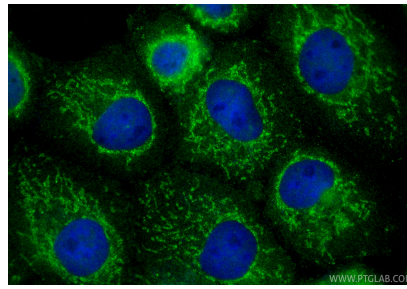
E: proteintech@ptglab.com
W: ptglab.com

This product is exclusively available under Proteintech Group brand and is not available to purchase from any other manufacturer.

Selected Validation Data



Various lysates were subjected to SDS PAGE followed by western blot with 31201-1-AP (PSMG4 antibody) at dilution of 1:4000 incubated at room temperature for 1.5 hours. This data was developed using the same antibody clone with 31201-1-PBS in a different storage buffer formulation.



Immunofluorescent analysis of (-20°C Methanol) fixed A431 cells using PSMG4 antibody (31201-1-AP) at dilution of 1:400 and CoraLite® 488-Conjugated Goat Anti-Rabbit IgG(H+L) (SA00013-2). This data was developed using the same antibody clone with 31201-1-PBS in a different storage buffer formulation.