

For Research Use Only

Leiomodin-2 Polyclonal antibody, PBS Only

Catalog Number: 31202-1-PBS



Basic Information

Catalog Number:

31202-1-PBS

Size:

100ug, Concentration: 1 mg/ml by Nanodrop;

Source:

Rabbit

Isotype:

IgG

Immunogen Catalog Number:

AG35312

GenBank Accession Number:

NM_207163.2

GeneID (NCBI):

442721

UNIPROT ID:

Q6P5Q4

Full Name:

Leiomodin 2 (cardiac)

Calculated MW:

62 kDa

Observed MW:

70-100 kDa

Purification Method:

Antigen affinity Purification

Applications

Tested Applications:

WB, Indirect ELISA

Species Specificity:

human, mouse, rat, pig

Background Information

Leiomodin-2 (Lmod2) is a striated muscle-specific actin-binding protein that plays a crucial role in the regulation of thin filament length and assembly in muscle cells. It is particularly important in cardiac and skeletal muscles. In the heart, Lmod2 is necessary for maintaining proper thin filament length, which is crucial for generating contractile force. Studies have shown that Lmod2 knockout in mice leads to dilated cardiomyopathy and rapid cardiac failure due to shorter and non-uniform thin filaments. Lmod2 is also essential for effective skeletal muscle contraction. Mutations or loss of Lmod2 can lead to significant impairments in muscle function. Mutations in the LMOD2 gene have been linked to severe neonatal and infantile dilated cardiomyopathy, a condition characterized by enlarged heart chambers and impaired contractility. Its observed molecular weight is 70-100 kDa.

Storage

Storage:

Store at -80°C.

Storage Buffer:

PBS Only

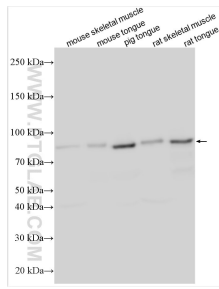
For technical support and original validation data for this product please contact:

T: 1 (888) 4PTGLAB (1-888-478-4522) (toll free in USA), or 1(312) 455-8498 (outside USA)

E: proteintech@ptglab.com
W: ptglab.com

This product is exclusively available under Proteintech Group brand and is not available to purchase from any other manufacturer.

Selected Validation Data



Various lysates were subjected to SDS PAGE followed by western blot with 31202-1-AP (LMO2 antibody) at dilution of 1:15000 incubated at room temperature for 1.5 hours. This data was developed using the same antibody clone with 31202-1-PBS in a different storage buffer formulation.