

For Research Use Only

CLK4 Polyclonal antibody, PBS Only

Catalog Number: 31205-1-PBS



Basic Information

Catalog Number:

31205-1-PBS

Size:

100ug, Concentration: 1 mg/ml by Nanodrop;

Source:

Rabbit

Isotype:

IgG

Immunogen Catalog Number:

AG34446

GenBank Accession Number:

NM_020666

GeneID (NCBI):

57396

UNIPROT ID:

Q9HAZ1

Full Name:

CDC-like kinase 4

Calculated MW:

57 kDa

Observed MW:

55 kDa

Purification Method:

Antigen affinity Purification

Applications

Tested Applications:

WB, Indirect ELISA

Species Specificity:

human, mouse

Background Information

CDC-like kinase 4 (CLK4) is a dual-specificity kinase that can phosphorylate the tyrosine or serine/threonine residues of substrates. CLK4 belongs to the LAMMER kinase family, which includes three other characterised isoforms: CLK1-3. CLK2 and CLK4 are essential regulators of DNA damage-induced IKK and NF- κ B activity (PMID: 37506701).

Storage

Storage:

Store at -80°C.

Storage Buffer:

PBS only, pH7.3

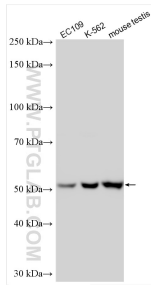
For technical support and original validation data for this product please contact:

T: 1 (888) 4PTGLAB (1-888-478-4522) (toll free in USA), or 1(312) 455-8498 (outside USA)

E: proteintech@ptglab.com
W: ptglab.com

This product is exclusively available under Proteintech Group brand and is not available to purchase from any other manufacturer.

Selected Validation Data



Various lysates were subjected to SDS PAGE followed by western blot with 31205-1-AP (CLK4 antibody) at dilution of 1:1000 incubated at room temperature for 1.5 hours. This data was developed using the same antibody clone with 31205-1-PBS in a different storage buffer formulation.