

For Research Use Only

# RENBP Polyclonal antibody

Catalog Number: 31209-1-AP



## Basic Information

**Catalog Number:**

31209-1-AP

**Size:**

150ul, Concentration: 500 ug/ml by Nanodrop;

**Source:**

Rabbit

**Isotype:**

IgG

**Immunogen Catalog Number:**

AG35056

**GenBank Accession Number:**

BC015558

**GeneID (NCBI):**

5973

**UNIPROT ID:**

P51606

**Full Name:**

renin binding protein

**Calculated MW:**

49 kDa

**Observed MW:**

29 kDa, 45-49 kDa

**Purification Method:**

Antigen affinity Purification

**Recommended Dilutions:**

WB 1:500-1:2000

## Applications

**Tested Applications:**

WB, ELISA

**Species Specificity:**

human

**Positive Controls:**

WB : U-937 cells,

## Background Information

Renin binding protein (RENBP) was originally identified as a protein in the kidney that was capable of binding renin in renal homogenates giving rise to a complex designated high molecular weight renin (PMID: 12866502). Studies have shown that human RnBP is the enzyme N-acetyl-D-glucosamine (GlcNAc) 2-epimerase (PMID: 12866502). RENBP has 3 isoforms produced by alternative splicing and alternative initiation with molecular weights of 29, 48, and 49 kDa, respectively.

## Storage

**Storage:**

Store at -20°C. Stable for one year after shipment.

**Storage Buffer:**

PBS with 0.02% sodium azide and 50% glycerol, pH7.3

Aliquoting is unnecessary for -20°C storage

\*\*\* 20ul sizes contain 0.1% BSA

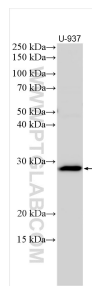
For technical support and original validation data for this product please contact:

T: 1 (888) 4PTGLAB (1-888-478-4522) (toll free in USA), or 1(312) 455-8498 (outside USA)

E: [proteintech@ptglab.com](mailto:proteintech@ptglab.com)  
W: [ptglab.com](http://ptglab.com)

This product is exclusively available under Proteintech Group brand and is not available to purchase from any other manufacturer.

## Selected Validation Data



U-937 cells lysates were subjected to SDS PAGE followed by western blot with 31209-1-AP (RENBP antibody) at dilution of 1:1000 incubated at room temperature for 1.5 hours.