

For Research Use Only

RIN2 Polyclonal antibody

Catalog Number: 31223-1-AP



Basic Information

Catalog Number:

31223-1-AP

Size:

150ul, Concentration: 300 ug/ml by Nanodrop;

Source:

Rabbit

Isotype:

IgG

Immunogen Catalog Number:

AG35011

GenBank Accession Number:

NM_018993

GeneID (NCBI):

54453

UNIPROT ID:

Q8WYP3

Full Name:

Ras and Rab interactor 2

Calculated MW:

100 kDa

Observed MW:

100-120 kDa

Purification Method:

Antigen affinity purification

Recommended Dilutions:

WB: 1:500-1:1000

Applications

Tested Applications:

WB, ELISA

Species Specificity:

human

Positive Controls:

WB : HepG2 cells, L02 cells, LNCaP cells, PC-3 cells

Background Information

RIN2 (Ras and Rab interactor 2), also known as RASSF4. RIN2 is mainly located in Golgi apparatus and participates in the process of material transport and secretion in cells. It is also distributed in cytoplasmic matrix, which may be related to signal transduction in cells. It is highly expressed in the brain, and also in the cerebellum, spinal cord and other nervous system tissues. RIN2 belongs to the family of Ras and Rab exchange factors and has a unique VP59 domain. It can be used as a nucleotide exchange factor to activate the downstream small GTP enzymes Rab5 and R-Ras, thus starting intracellular signal transduction and regulating cytoskeleton recombination, synapse secretion and cell adhesion. The molecular weight of RIN2 is 100 kDa.

Storage

Storage:

Store at -20°C. Stable for one year after shipment.

Storage Buffer:

PBS with 0.02% sodium azide and 50% glycerol, pH7.3

Aliquoting is unnecessary for -20°C storage

*** 20ul sizes contain 0.1% BSA

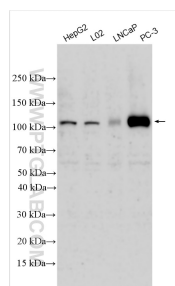
For technical support and original validation data for this product please contact:

T: 1 (888) 4PTGLAB (1-888-478-4522) (toll free in USA), or 1(312) 455-8498 (outside USA)

E: proteintech@ptglab.com
W: ptglab.com

This product is exclusively available under Proteintech Group brand and is not available to purchase from any other manufacturer.

Selected Validation Data



Various lysates were subjected to SDS PAGE followed by western blot with 31223-1-AP (RIN2 antibody) at dilution of 1:800 incubated at room temperature for 1.5 hours.