

For Research Use Only

RC3H1 Polyclonal antibody

Catalog Number: 31234-1-AP



Basic Information

Catalog Number: 31234-1-AP	GenBank Accession Number: NM_001300850	Purification Method: Antigen affinity Purification
Size: 150ul , Concentration: 350 ug/ml by Nanodrop;	GeneID (NCBI): 149041	Recommended Dilutions: WB 1:2000-1:10000
Source: Rabbit	UNIPROT ID: Q5TC82	IHC 1:500-1:2000
Isotype: IgG	Full Name: ring finger and CCCH-type zinc finger domains 1	IF/ICC 1:200-1:800
Immunogen Catalog Number: AG35089	Calculated MW: 126 kDa	
	Observed MW: 130-150 kDa	

Applications

Tested Applications: WB, IHC, IF/ICC, ELISA	Positive Controls:
Species Specificity: human, mouse	WB : 4T1 cells, HEK-293T cells, HeLa cells
Note-IHC: suggested antigen retrieval with TE buffer pH 9.0; (*) Alternatively, antigen retrieval may be performed with citrate buffer pH 6.0	IHC : human ovary cancer tissue,
	IF/ICC : HeLa cells,

Background Information

Roquin-1 (Rc3h1) is an E3 ubiquitin ligase originally discovered in a mutational screen for genetic factors contributory to systemic lupus erythematosus-like symptoms in mice. A single base pair mutation in the Rc3h1 gene resulted in the manifestation of autoantibody production and sustained immunological inflammation characterized by excessive T follicular helper cell activation and formation of germinal centers. (PMID: 26673963)

Storage

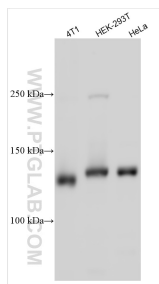
Storage:
Store at -20°C. Stable for one year after shipment.
Storage Buffer:
PBS with 0.02% sodium azide and 50% glycerol pH 7.3.
Aliquoting is unnecessary for -20°C storage

*** 20ul sizes contain 0.1% BSA

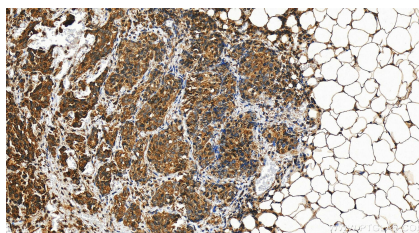
For technical support and original validation data for this product please contact:
T: 1 (888) 4PTGLAB (1-888-478-4522) (toll free in USA), or 1(312) 455-8498 (outside USA)
E: proteintech@ptglab.com
W: ptglab.com

This product is exclusively available under Proteintech Group brand and is not available to purchase from any other manufacturer.

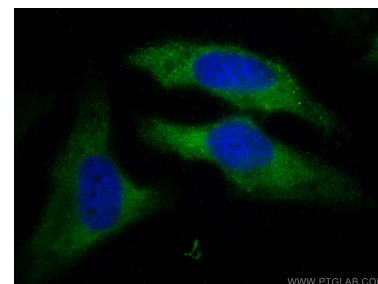
Selected Validation Data



Various lysates were subjected to SDS PAGE followed by western blot with 31234-1-AP (RC3H1 antibody) at dilution of 1:5000 incubated at room temperature for 1.5 hours.



Immunohistochemical analysis of paraffin-embedded human ovary cancer tissue slide using 31234-1-AP (RC3H1 antibody) at dilution of 1:1000 (under 20x lens). Heat mediated antigen retrieval with Tris-EDTA buffer (pH 9.0).



Immunofluorescent analysis of (-20°C Ethanol) fixed HeLa cells using RC3H1 antibody (31234-1-AP) at dilution of 1:400 and Multi-rAb CoraLite® Plus 488-Goat Anti-Rabbit Recombinant Secondary Antibody (H+L) (RGAR002).