

For Research Use Only

BANF2 Polyclonal antibody

Catalog Number: 31236-1-AP



Basic Information

Catalog Number:

31236-1-AP

Size:

150ul , Concentration: 300 ug/ml by Nanodrop;

Source:

Rabbit

Isotype:

IgG

Immunogen Catalog Number:

AG35307

GenBank Accession Number:

PL00285355

GeneID (NCBI):

140836

UNIPROT ID:

Q9H503

Full Name:

barrier to autointegration factor 2

Calculated MW:

10 kDa

Observed MW:

11 kDa

Purification Method:

Antigen affinity Purification

Recommended Dilutions:

WB 1:500-1:3000

Applications

Tested Applications:

WB, ELISA

Species Specificity:

Human, mouse, rat

Positive Controls:

WB : mouse testis tissue, rat testis tissue

Background Information

BANF2 (Barrier-to-autointegration factor 2), also called BAF-L (Barrier-to-autointegration factor-like protein), is a homologous gene termed BAF, which shows a 53% similarity in the protein sequence with BANF2 in humans (PMID: 35216101; 16337940). Unlike BAF, BANF2 plays an important role in spermiogenesis and spermatozoal function, and it is a male germ cell marker, whose expression is highly associated with the maturation of male germ cells (PMID: 33951625; 35216101).

Storage

Storage:

Store at -20°C. Stable for one year after shipment.

Storage Buffer:

PBS with 0.02% sodium azide and 50% glycerol pH 7.3.

Aliquoting is unnecessary for -20°C storage

*** 20ul sizes contain 0.1% BSA

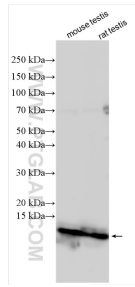
For technical support and original validation data for this product please contact:

T: 1 (888) 4PTGLAB (1-888-478-4522) (toll free in USA), or 1(312) 455-8498 (outside USA)

E: proteintech@ptglab.com
W: ptglab.com

This product is exclusively available under Proteintech Group brand and is not available to purchase from any other manufacturer.

Selected Validation Data



Various lysates were subjected to SDS PAGE followed by western blot with 31236-1-AP (BANF2 antibody) at dilution of 1:1500 incubated at room temperature for 1.5 hours.