

For Research Use Only

AFP Polyclonal antibody

Catalog Number: 31256-1-AP



Basic Information

Catalog Number: 31256-1-AP	GenBank Accession Number: NM_007423.4	Purification Method: Antigen affinity Purification
Size: 150ul , Concentration: 400 ug/ml by Nanodrop;	GeneID (NCBI): 11576	Recommended Dilutions: WB 1:2000-1:12000
Source: Rabbit	UNIPROT ID: P02772	IHC 1:200-1:800
Isotype: IgG	Full Name: alpha fetoprotein	IF/ICC 1:200-1:800
Immunogen Catalog Number: EG0670	Calculated MW: 67KD	
	Observed MW: 68-72 kDa	

Applications

Tested Applications: WB, IHC, IF/ICC, ELISA	Positive Controls:
Species Specificity: human, mouse	WB : mouse placenta tissue, HepG2 cells, human placenta tissue
Note-IHC: suggested antigen retrieval with TE buffer pH 9.0; (*) Alternatively, antigen retrieval may be performed with citrate buffer pH 6.0	IHC : mouse placenta tissue,
	IF/ICC : HepG2 cells,

Background Information

Alpha-fetoprotein (AFP) is one of the earliest proteins to be synthesised by the embryonic liver. The synthesis of AFP decreases dramatically after birth and only trace amounts are expressed in the adult liver. High serum AFP concentrations are also found in connection with primary liver cancer and teratocarcinoma.

Storage

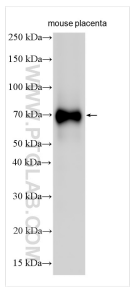
Storage:
Store at -20°C. Stable for one year after shipment.
Storage Buffer:
PBS with 0.02% sodium azide and 50% glycerol
Aliquoting is unnecessary for -20°C storage

*** 20ul sizes contain 0.1% BSA

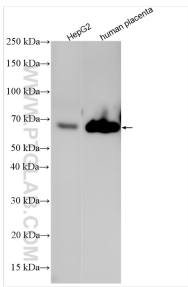
For technical support and original validation data for this product please contact:
T: 1 (888) 4PTGLAB (1-888-478-4522) (toll free in USA), or 1(312) 455-8498 (outside USA)
E: proteintech@ptglab.com
W: ptglab.com

This product is exclusively available under Proteintech Group brand and is not available to purchase from any other manufacturer.

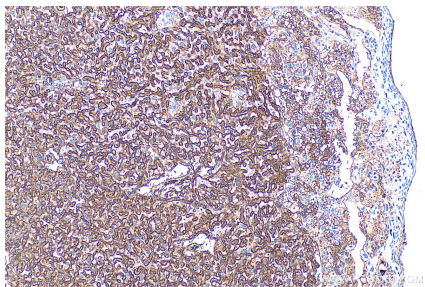
Selected Validation Data



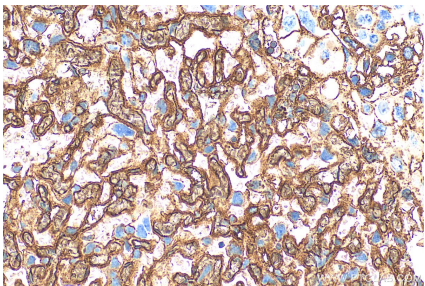
Various lysates were subjected to SDS PAGE followed by western blot with 31256-1-AP (Afp antibody) at dilution of 1:6000 incubated at room temperature for 1.5 hours.



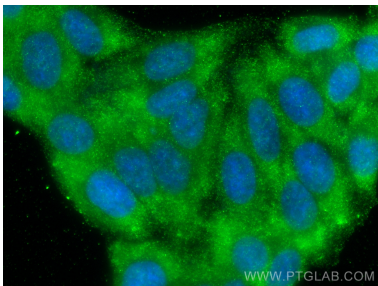
Various lysates were subjected to SDS PAGE followed by western blot with 31256-1-AP (Afp antibody) at dilution of 1:6000 incubated at room temperature for 1.5 hours.



Immunohistochemical analysis of paraffin-embedded mouse placenta tissue slide using 31256-1-AP (AFP antibody) at dilution of 1:400 (under 10x lens). Heat mediated antigen retrieval with Tris-EDTA buffer (pH 9.0).



Immunohistochemical analysis of paraffin-embedded mouse placenta tissue slide using 31256-1-AP (AFP antibody) at dilution of 1:400 (under 40x lens). Heat mediated antigen retrieval with Tris-EDTA buffer (pH 9.0).



Immunofluorescent analysis of (-20°C Ethanol) fixed HepG2 cells using Afp antibody (31256-1-AP) at dilution of 1:400 and CoraLite®488-Conjugated Goat Anti-Rabbit IgG(H+L) (SA00013-2).