

For Research Use Only

CDC42BPA Polyclonal antibody

Catalog Number: 31297-1-AP



Basic Information

Catalog Number:

31297-1-AP

Size:

150ul , Concentration: 750 ug/ml by Nanodrop;

Source:

Rabbit

Isotype:

IgG

Immunogen Catalog Number:

AG34955

GenBank Accession Number:

NM_001366019

GeneID (NCBI):

8476

UNIPROT ID:

Q5VT25

Full Name:

CDC42 binding protein kinase alpha (DMPK-like)

Calculated MW:

197 kDa

Observed MW:

200 kDa

Purification Method:

Antigen affinity Purification

Recommended Dilutions:

WB 1:1000-1:8000

Applications

Tested Applications:

WB, ELISA

Species Specificity:

human

Positive Controls:

WB : HUVEC cells, K-562 cells, RT-4 cells, SiHa cells

Background Information

Cdc42 binding protein kinase alpha (Cdc42BPA/MRCKa), is a member of the serine/threonine protein kinase family. Previous studies suggested that Cdc42BPA may mediate the Cdc42-induced peripheral actin formation to promote cytoskeletal reorganization [5]. However, the biological function and clinical significance of Cdc42BPA in colon cancer are unclear. (PMID: 29072916)

Storage

Storage:

Store at -20°C. Stable for one year after shipment.

Storage Buffer:

PBS with 0.02% sodium azide and 50% glycerol pH 7.3.

Aliquoting is unnecessary for -20°C storage

*** 20ul sizes contain 0.1% BSA

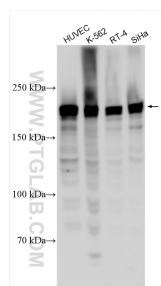
For technical support and original validation data for this product please contact:

T: 1 (888) 4PTGLAB (1-888-478-4522) (toll free in USA), or 1(312) 455-8498 (outside USA)

E: proteintech@ptglab.com
W: ptglab.com

This product is exclusively available under Proteintech Group brand and is not available to purchase from any other manufacturer.

Selected Validation Data



Various lysates were subjected to SDS PAGE followed by western blot with 31297-1-AP (CDC 42BP4 antibody) at dilution of 1:4000 incubated at room temperature for 1.5 hours.