

For Research Use Only

# EPS15 Polyclonal antibody

Catalog Number: 31301-1-AP



## Basic Information

### Catalog Number:

31301-1-AP

### Size:

150ul, Concentration: 500 ug/ml by Nanodrop;

### Source:

Rabbit

### Isotype:

IgG

### Immunogen Catalog Number:

AG35282

### GenBank Accession Number:

NM\_001981.3

### GeneID (NCBI):

2060

### UNIPROT ID:

P42566

### Full Name:

epidermal growth factor receptor pathway substrate 15

### Calculated MW:

99 kDa

### Observed MW:

140 kDa

### Purification Method:

Antigen affinity Purification

### Recommended Dilutions:

WB 1:2000-1:12000

## Applications

### Tested Applications:

WB, ELISA

### Species Specificity:

Human

### Positive Controls:

WB : HeLa cells, MCF-7 cells

## Background Information

EPS15 was originally identified as a substrate for the kinase activity of the epidermal growth factor receptor (EGFR). EPS15 has a tripartite structure comprising an NH2-terminal portion, which contains three EH domains, a central putative coiled-coil region, and a COOH-terminal domain containing multiple copies of the amino acid triplet Aspartate-Proline-Phenylalanine (PMID: 10481267). EPS15 is phosphorylated on tyrosine residues following EGFR activation (PMID: 7689153).

## Storage

### Storage:

Store at -20°C. Stable for one year after shipment.

### Storage Buffer:

PBS with 0.02% sodium azide and 50% glycerol pH 7.3.

Aliquoting is unnecessary for -20°C storage

\*\*\* 20ul sizes contain 0.1% BSA

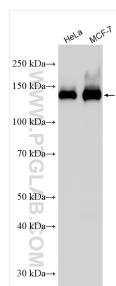
For technical support and original validation data for this product please contact:

T: 1 (888) 4PTGLAB (1-888-478-4522) (toll free in USA), or 1(312) 455-8498 (outside USA)

E: [proteintech@ptglab.com](mailto:proteintech@ptglab.com)  
W: [ptglab.com](http://ptglab.com)

This product is exclusively available under Proteintech Group brand and is not available to purchase from any other manufacturer.

## Selected Validation Data



Various lysates were subjected to SDS PAGE followed by western blot with 31301-1-AP (EPS15 antibody) at dilution of 1:6000 incubated at room temperature for 1.5 hours.