

For Research Use Only

SCYL1 Polyclonal antibody

Catalog Number: 31302-1-AP



Basic Information

Catalog Number:

31302-1-AP

Size:

150ul, Concentration: 300 ug/ml by Nanodrop;

Source:

Rabbit

Isotype:

IgG

Immunogen Catalog Number:

AG35298

GenBank Accession Number:

NM_020680

GeneID (NCBI):

57410

UNIPROT ID:

Q96KG9

Full Name:

SCY1-like 1 (S. cerevisiae)

Calculated MW:

90 kDa

Observed MW:

110 kDa

Purification Method:

Antigen affinity Purification

Recommended Dilutions:

WB 1:500-1:2000

Applications

Tested Applications:

WB, ELISA

Species Specificity:

Human

Positive Controls:

WB : HEK-293T cells, HeLa cells

Storage

Storage:

Store at -20°C. Stable for one year after shipment.

Storage Buffer:

PBS with 0.02% sodium azide and 50% glycerol pH 7.3.

Aliquoting is unnecessary for -20°C storage

*** 20ul sizes contain 0.1% BSA

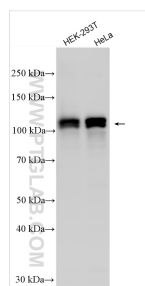
For technical support and original validation data for this product please contact:

T: 1 (888) 4PTGLAB (1-888-478-4522) (toll free in USA), or 1(312) 455-8498 (outside USA)

E: proteintech@ptglab.com
W: ptglab.com

This product is exclusively available under Proteintech Group brand and is not available to purchase from any other manufacturer.

Selected Validation Data



Various lysates were subjected to SDS PAGE followed by western blot with 31302-1-AP (SCYL1 antibody) at dilution of 1:1000 incubated at room temperature for 1.5 hours.