

For Research Use Only

# SCYL1 Polyclonal antibody, PBS Only

Catalog Number: 31302-1-PBS

Featured Product



## Basic Information

**Catalog Number:**

31302-1-PBS

**Size:**

100ug, Concentration: 1 mg/ml by Nanodrop;

**Source:**

Rabbit

**Isotype:**

IgG

**Immunogen Catalog Number:**

AG35298

**GenBank Accession Number:**

NM\_020680

**GeneID (NCBI):**

57410

**UNIPROT ID:**

Q96KG9

**Full Name:**

SCY1-like 1 (*S. cerevisiae*)

**Calculated MW:**

90 kDa

**Observed MW:**

110 kDa

**Purification Method:**

Antigen affinity Purification

## Applications

**Tested Applications:**

WB, Indirect ELISA

**Species Specificity:**

human

## Storage

**Storage:**

Store at -80°C.

**Storage Buffer:**

PBS only, pH7.3

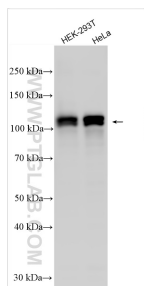
For technical support and original validation data for this product please contact:

T: 1 (888) 4PTGLAB (1-888-478-4522) (toll free in USA), or 1(312) 455-8498 (outside USA)

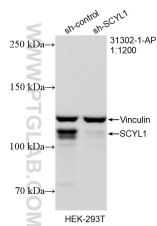
E: [proteintech@ptglab.com](mailto:proteintech@ptglab.com)  
W: [ptglab.com](http://ptglab.com)

This product is exclusively available under Proteintech Group brand and is not available to purchase from any other manufacturer.

## Selected Validation Data



Various lysates were subjected to SDS PAGE followed by western blot with 31302-1-AP (SCYL1 antibody) at dilution of 1:1000 incubated at room temperature for 1.5 hours. This data was developed using the same antibody clone with 31302-1-PBS in a different storage buffer formulation.



WB result of SCYL1 antibody (31302-1-AP; 1:1200; incubated at room temperature for 1.5 hours) with sh-Control and sh-SCYL1 transfected HEK-293T cells. This data was developed using the same antibody clone with 31302-1-PBS in a different storage buffer formulation.