

For Research Use Only

# RAB21 Polyclonal antibody

Catalog Number: 31303-1-AP



## Basic Information

<b>Catalog Number:</b> 31303-1-AP	<b>GenBank Accession Number:</b> NM_014999	<b>Purification Method:</b> Antigen affinity Purification
<b>Size:</b> 150ul , Concentration: 300 ug/ml by Nanodrop;	<b>GeneID (NCBI):</b> 23011	<b>Recommended Dilutions:</b> WB 1:1000-1:4000
<b>Source:</b> Rabbit	<b>UNIPROT ID:</b> Q9UL25	
<b>Isotype:</b> IgG	<b>Full Name:</b> RAB21, member RAS oncogene family	
<b>Immunogen Catalog Number:</b> AG35291	<b>Calculated MW:</b> 24 kDa	
	<b>Observed MW:</b> 24 kDa	

## Applications

<b>Tested Applications:</b> WB, ELISA	<b>Positive Controls:</b> WB : MDA-MB-231 cells, HeLa cells
<b>Species Specificity:</b> human	

## Background Information

Small GTPase Rab21 is a ubiquitously expressed and has recently been shown to associate with the  $\alpha$  tails of several integrins via the shared conserved membrane proximal sequence, thus regulating cell adhesion and migration via controlling the endo/exocytic trafficking of most integrin heterodimers (PMID: 18804435). Rab21 is required for the pruning of the immature neurites during the multipolar-to-bipolar transition (PMID: 36683567). Knock down of Rab21 impairs integrin-mediated cell adhesion and motility, whereas its overexpression stimulates cell migration and cancer cell adhesion to collagen and human bone (PMID: 16754960).

## Storage

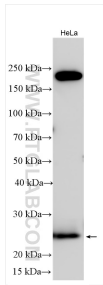
**Storage:**  
Store at -20°C. Stable for one year after shipment.  
**Storage Buffer:**  
PBS with 0.02% sodium azide and 50% glycerol pH 7.3.  
Aliquoting is unnecessary for -20°C storage

\*\*\* 20ul sizes contain 0.1% BSA

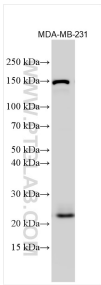
For technical support and original validation data for this product please contact:  
T: 1 (888) 4PTGLAB (1-888-478-4522) (toll free in USA), or 1(312) 455-8498 (outside USA)  
E: [proteintech@ptglab.com](mailto:proteintech@ptglab.com)  
W: [ptglab.com](http://ptglab.com)

This product is exclusively available under Proteintech Group brand and is not available to purchase from any other manufacturer.

# Selected Validation Data



Various lysates were subjected to SDS PAGE followed by western blot with 31303-1-AP (RAB21 antibody) at dilution of 1:2000 incubated at room temperature for 1.5 hours.



Various lysates were subjected to SDS PAGE followed by western blot with 31303-1-AP (RAB21 antibody) at dilution of 1:2000 incubated at room temperature for 1.5 hours.