

For Research Use Only

EPN2 Polyclonal antibody

Catalog Number: 31334-1-AP



Basic Information

Catalog Number: 31334-1-AP	GenBank Accession Number: BC093972	Purification Method: Antigen affinity Purification
Size: 150ul , Concentration: 550 ug/ml by Nanodrop;	GeneID (NCBI): 22905	Recommended Dilutions: WB 1:2000-1:12000
Source: Rabbit	UNIPROT ID: O95208	IHC 1:50-1:500
Isotype: IgG	Full Name: epsin 2	IF/ICC 1:200-1:800
Immunogen Catalog Number: AG35194	Calculated MW: 584 aa, 62 kDa	
	Observed MW: 68 kDa	

Applications

Tested Applications: WB, IHC, IF/ICC, ELISA	Positive Controls:
Species Specificity: human	WB : HEK-293T cells, HepG2 cells, SH-SY5Y cells
Note-IHC: suggested antigen retrieval with TE buffer pH 9.0; (*) Alternatively, antigen retrieval may be performed with citrate buffer pH 6.0	IHC : mouse lung tissue,
	IF/ICC : HepG2 cells,

Background Information

EPN2 (EPS 15 interacting protein 2) is a protein that interacts with clathrin and adaptor-related protein complex 2, alpha 1 subunit. EPN2 is found in a brain-derived clathrin-coated vesicle fraction and localizes to the peri-Golgi region and the cell periphery.

Storage

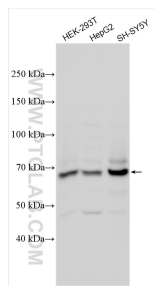
Storage:
Store at -20°C. Stable for one year after shipment.
Storage Buffer:
PBS with 0.02% sodium azide and 50% glycerol, pH7.3
Aliquoting is unnecessary for -20°C storage

*** 20ul sizes contain 0.1% BSA

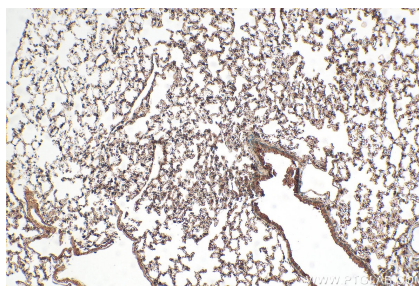
For technical support and original validation data for this product please contact:
T: 1 (888) 4PTGLAB (1-888-478-4522) (toll free in USA), or 1(312) 455-8498 (outside USA)
E: proteintech@ptglab.com
W: ptglab.com

This product is exclusively available under Proteintech Group brand and is not available to purchase from any other manufacturer.

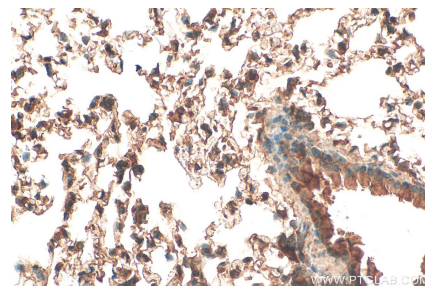
Selected Validation Data



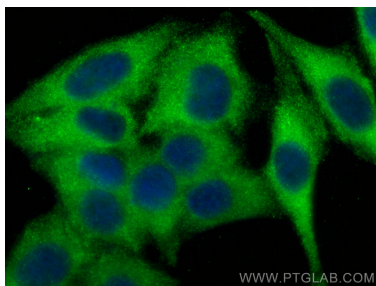
Various lysates were subjected to SDS PAGE followed by western blot with 31334-1-AP (EPN2 antibody) at dilution of 1:6000 incubated at room temperature for 1.5 hours.



Immunohistochemical analysis of paraffin-embedded mouse lung tissue slide using 31334-1-AP (EPN2 antibody) at dilution of 1:200 (under 10x lens). Heat mediated antigen retrieval with Tris-EDTA buffer (pH 9.0).



Immunohistochemical analysis of paraffin-embedded mouse lung tissue slide using 31334-1-AP (EPN2 antibody) at dilution of 1:200 (under 40x lens). Heat mediated antigen retrieval with Tris-EDTA buffer (pH 9.0).



Immunofluorescent analysis of (-20°C Ethanol) fixed HepG2 cells using EPN2 antibody (31334-1-AP) at dilution of 1:400 and CoraLite®488-Conjugated Goat Anti-Rabbit IgG(H+L) (SA00013-2).