

For Research Use Only

Albumin Polyclonal antibody

Catalog Number: 31340-1-AP



Basic Information

Catalog Number:

31340-1-AP

Size:

150ul , Concentration: 500 ug/ml by Nanodrop;

Source:

Rabbit

Isotype:

IgG

GenBank Accession Number:

GeneID (NCBI):

24186

UNIPROT ID:

P02770

Full Name:

albumin

Calculated MW:

69 kDa

Observed MW:

69 kDa

Purification Method:

Antigen affinity purification

Recommended Dilutions:

WB 1:5000-1:50000

IHC 1:1000-1:4000

IF-P 1:50-1:500

Applications

Tested Applications:

WB, IHC, IF-P, ELISA

Species Specificity:

mouse, rat

Positive Controls:

WB : mouse liver tissue, rat brain tissue, rat liver tissue

IHC : rat liver tissue,

IF-P : rat liver tissue,

Note-IHC: suggested antigen retrieval with TE buffer pH 9.0; (*) Alternatively, antigen retrieval may be performed with citrate buffer pH 6.0

Background Information

Albumin is a multi-functional protein that participates in the regulation of colloid osmotic pressure, transportation of endogenous ligands and drugs, and regulation of microvascular permeability. Albumin major calcium and magnesium transporter in plasma, binds approximately 45% of circulating calcium and magnesium in plasma. Human (HSA) and rat (RSA) serum albumins share similar characteristics of binding biologically active substances.

Storage

Storage:

Store at -20°C. Stable for one year after shipment.

Storage Buffer:

PBS with 0.02% sodium azide and 50% glycerol pH 7.3.

Aliquoting is unnecessary for -20°C storage

*** 20ul sizes contain 0.1% BSA

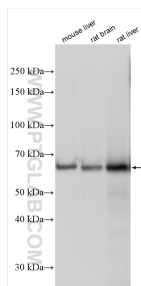
For technical support and original validation data for this product please contact:

T: 1 (888) 4PTGLAB (1-888-478-4522) (toll free in USA), or 1(312) 455-8498 (outside USA)

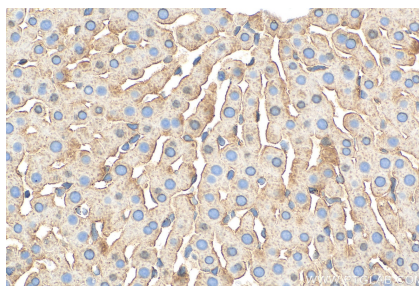
E: proteintech@ptglab.com
W: ptglab.com

This product is exclusively available under Proteintech Group brand and is not available to purchase from any other manufacturer.

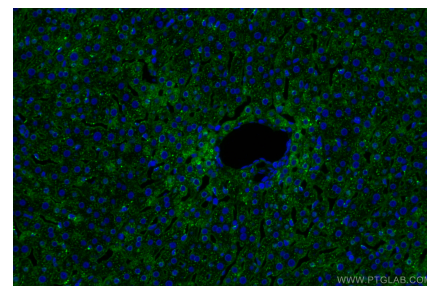
Selected Validation Data



Various lysates were subjected to SDS PAGE followed by western blot with 31340-1-AP (Albumin antibody) at dilution of 1:30000 incubated at room temperature for 1.5 hours.



Immunohistochemical analysis of paraffin-embedded rat liver tissue slide using 31340-1-AP (Albumin antibody) at dilution of 1:2000 (under 40x lens). Heat mediated antigen retrieval with Tris-EDTA buffer (pH 9.0).



Immunofluorescent analysis of (4% PFA) fixed paraffin-embedded rat liver tissue using Albumin antibody (31340-1-AP) at dilution of 1:200 and Multi-rAb CoraLite® Plus 488-Goat Anti-Rabbit Recombinant Secondary Antibody (H+L) (RGAR002). Heat mediated antigen retrieval with Tris-EDTA buffer (pH 9.0).