

For Research Use Only

# GOLT1B Polyclonal antibody

Catalog Number: 31368-1-AP



## Basic Information

<b>Catalog Number:</b> 31368-1-AP	<b>GenBank Accession Number:</b> BC012455	<b>Purification Method:</b> Antigen affinity Purification
<b>Size:</b> 150ul , Concentration: 530 ug/ml by Nanodrop;	<b>GeneID (NCBI):</b> 51026	<b>Recommended Dilutions:</b> WB: 1:500-1:1000
<b>Source:</b> Rabbit	<b>UNIPROT ID:</b> Q9Y3E0	
<b>Isotype:</b> IgG	<b>Full Name:</b> golgi transport 1 homolog B (S. cerevisiae)	
<b>Immunogen Catalog Number:</b> AG34859	<b>Calculated MW:</b> 15 kDa	
	<b>Observed MW:</b> 15 kDa	

## Applications

<b>Tested Applications:</b> WB, ELISA	<b>Positive Controls:</b> WB : rat stomach tissue,
<b>Species Specificity:</b> human, mouse, rat	

## Background Information

Golgi transport 1B (GOLT1B) is a member of the GOT1 family, and abnormal expressions of proteins in this family are associated with GA membrane trafficking disorders and cellular malignant behaviors. The GOT1 family consists of two primary members, GOLT1A and GOLT1B. High expression of GOLT1A has been correlated with poor prognosis and resistance to endocrine therapy in breast cancer. GOLT1B is located primarily in early Golgi cisternae, the absence of which induces a substantial reduction in the endoplasmic reticulum (ER)-Golgi transport efficiency. The amplification of GOLT1B is correlated with poor prognosis in lung cancer. GOLT1B contributes to epithelial-mesenchymal transition (EMT) in colorectal cancer (CRC) by activating WNT signaling, influencing the secretion of interferon (IFN)- $\gamma$ , and apoptosis of tumor-infiltrating T lymphocytes. (PMID: 38130634)

## Storage

**Storage:**  
Store at -20°C. Stable for one year after shipment.  
**Storage Buffer:**  
PBS with 0.02% sodium azide and 50% glycerol, pH7.3  
Aliquoting is unnecessary for -20°C storage

\*\*\* 20ul sizes contain 0.1% BSA

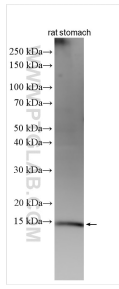
For technical support and original validation data for this product please contact:

T: 1 (888) 4PTGLAB (1-888-478-4522) (toll free in USA), or 1(312) 455-8498 (outside USA)

E: [proteintech@ptglab.com](mailto:proteintech@ptglab.com)  
W: [ptglab.com](http://ptglab.com)

This product is exclusively available under Proteintech Group brand and is not available to purchase from any other manufacturer.

## Selected Validation Data



Rat stomach tissue were subjected to SDS PAGE followed by western blot with 31368-1-AP (GOLT1B antibody) at dilution of 1:500 incubated at room temperature for 1.5 hours.