

For Research Use Only

SOD1 Polyclonal antibody

Catalog Number: 31400-1-AP



Basic Information

Catalog Number:

31400-1-AP

Size:

150ul, Concentration: 500 ug/ml by Nanodrop;

Source:

Rabbit

Isotype:

IgG

GenBank Accession Number:

NM_000454.5

GeneID (NCBI):

6647

UNIPROT ID:

P00441

Full Name:

superoxide dismutase 1, soluble

Calculated MW:

16kDa

Observed MW:

16-20 kDa

Purification Method:

Antigen affinity Purification

Recommended Dilutions:

WB 1:2000-1:12000

Applications

Tested Applications:

WB, ELISA

Species Specificity:

Human, mouse, rat

Positive Controls:

WB : HeLa cells, Jurkat cells, mouse liver tissue, rat liver tissue

Background Information

Superoxide dismutase 1, soluble (amyotrophic lateral sclerosis 1 (adult)) (SOD1, synonyms: ALS, SOD, ALS1, IPOA) binds copper and zinc ions and is one of two isozymes responsible for destroying free uperoxide radicals in the body. This isozyme is a soluble cytoplasmic protein, acting as a homodimer to convert naturally-occurring but harmful superoxide radicals to molecular oxygen and hydrogen peroxide. The other isozyme is a mitochondrial protein. Mutations in this gene have been implicated as causes of familial amyotrophic lateral sclerosis.

Storage

Storage:

Store at -20°C. Stable for one year after shipment.

Storage Buffer:

PBS with 0.02% sodium azide and 50% glycerol pH 7.3.

Aliquoting is unnecessary for -20°C storage

*** 20ul sizes contain 0.1% BSA

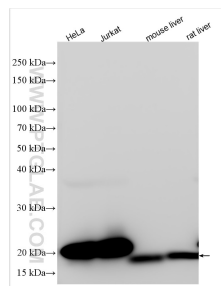
For technical support and original validation data for this product please contact:

T: 1 (888) 4PTGLAB (1-888-478-4522) (toll free in USA), or 1(312) 455-8498 (outside USA)

E: proteintech@ptglab.com
W: ptglab.com

This product is exclusively available under Proteintech Group brand and is not available to purchase from any other manufacturer.

Selected Validation Data



Various lysates were subjected to SDS PAGE followed by western blot with 31400-1-AP (SOD1 antibody) at dilution of 1:6000 incubated at room temperature for 1.5 hours.