

For Research Use Only

RAB13 Polyclonal antibody, PBS Only

Catalog Number: 31416-1-PBS

Featured Product



Basic Information

Catalog Number:

31416-1-PBS

Size:

100ug, Concentration: 1 mg/ml by Nanodrop;

Source:

Rabbit

Isotype:

IgG

Immunogen Catalog Number:

AG34898

GenBank Accession Number:

BC000799

GeneID (NCBI):

5872

UNIPROT ID:

P51153

Full Name:

RAB13, member RAS oncogene family

Calculated MW:

203 aa, 23 kDa

Observed MW:

20-23 kDa

Purification Method:

Antigen affinity Purification

Applications

Tested Applications:

WB, IHC, FC (Intra), Indirect ELISA

Species Specificity:

human, mouse

Background Information

RAB13 (Ras-related protein Rab-13) is also named as GIG4. Rab13 is a member of the Rab GTPase family. RAB13 is highly expressed in malignant cells. Rab13 was highly expressed in BCSC of triple-negative breast cancer (TNBC) (PMID: 35395074). RAB13 is involved in a number of processes in LIHC, including MTORC1 signaling, MYC targets v1, G2M checkpoint, MITOTIC spindle, DNA repair, P53 pathway, glycolysis, PI3K-AKT-MTOR signaling, etc (PMID: 37803063). RAB13 enhances its circulation to the plasma membrane to promote breast cancer invasion. By influencing the tumor microenvironment, RAB13 maintains breast cancer stem cells (PMID: 37803063).

Storage

Storage:

Store at -80°C.

Storage Buffer:

PBS only, pH7.3

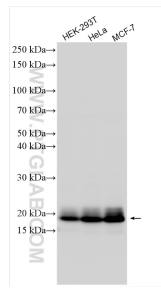
For technical support and original validation data for this product please contact:

T: 1 (888) 4PTGLAB (1-888-478-4522) (toll free in USA), or 1(312) 455-8498 (outside USA)

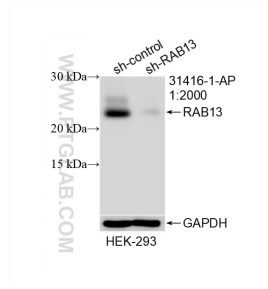
E: proteintech@ptglab.com
W: ptglab.com

This product is exclusively available under Proteintech Group brand and is not available to purchase from any other manufacturer.

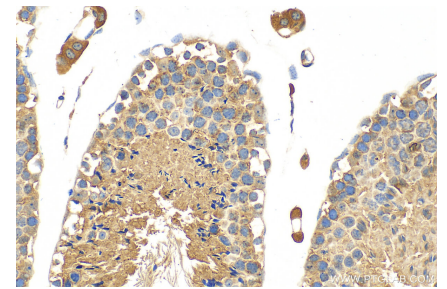
Selected Validation Data



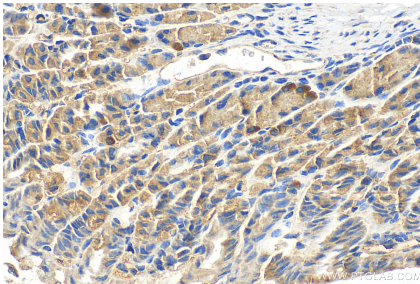
Various lysates were subjected to SDS PAGE followed by western blot with 31416-1-AP (RAB13 antibody) at dilution of 1:4000 incubated at room temperature for 1.5 hours. This data was developed using the same antibody clone with 31416-1-PBS in a different storage buffer formulation.



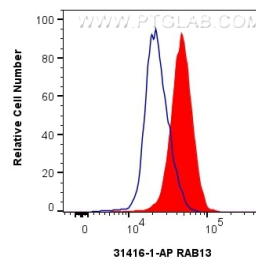
WB result of RAB13 antibody (31416-1-AP; 1:2000; incubated at room temperature for 1.5 hours) with sh-Control and sh-RAB13 transfected HEK-293 cells. This data was developed using the same antibody clone with 31416-1-PBS in a different storage buffer formulation.



Immunohistochemical analysis of paraffin-embedded mouse testis tissue slide using 31416-1-AP (RAB13 antibody) at dilution of 1:200 (under 40x lens). Heat mediated antigen retrieval with Tris-EDTA buffer (pH 9.0). This data was developed using the same antibody clone with 31416-1-PBS in a different storage buffer formulation.



Immunohistochemical analysis of paraffin-embedded mouse stomach tissue slide using 31416-1-AP (RAB13 antibody) at dilution of 1:200 (under 40x lens). Heat mediated antigen retrieval with Tris-EDTA buffer (pH 9.0). This data was developed using the same antibody clone with 31416-1-PBS in a different storage buffer formulation.



1x10⁶ K-562 cells were intracellularly stained with 0.8 ug RAB13 Polyclonal antibody (31416-1-AP) and Multi-rAb Coralite Plus 488-Goat Anti-Rabbit Recombinant Secondary Antibody (H+L) (RGAR002)(red), or 0.8 ug Rabbit IgG control Rabbit PolyAb (30000-0-AP) (blue). Cells were fixed with 4% PFA and permeabilized with Flow Cytometry Perm Buffer (PF00011-C). This data was developed using the same antibody clone with 31416-1-PBS in a

