

For Research Use Only

# NEK7 Polyclonal antibody, PBS Only

Catalog Number: 31422-1-PBS



## Basic Information

**Catalog Number:**

31422-1-PBS

**Size:**

100ug, Concentration: 1 mg/ml by Nanodrop;

**Source:**

Rabbit

**Isotype:**

IgG

**Immunogen Catalog Number:**

AG33629

**GenBank Accession Number:**

NM\_133494

**GeneID (NCBI):**

140609

**UNIPROT ID:**

Q8TDX7

**Full Name:**

NIMA (never in mitosis gene a)-related kinase 7

**Calculated MW:**

35

**Observed MW:**

32-35 kDa

**Purification Method:**

Antigen affinity Purification

## Applications

**Tested Applications:**

WB, IHC, IF/ICC, Indirect ELISA

**Species Specificity:**

human, mouse, rat

## Background Information

Mammalian NIMA-related kinases (NEKs) represent a family of serine/threonine kinases, named NEK1-NEK11, which are implicated in the control of several aspects of mitosis and are involved in non-mitotic functions (PMID: 33364979). NIMA-related kinase 7 (NEK7) is the smallest NIMA-related kinase (NEK) in mammals. NEK7 is identified as a highly conserved serine or threonine kinase, which is not only crucial for mitosis entry, cell cycle progression, cell division, and mitotic process, but also expressed in brain, heart, lung, liver, spleen, and other tissues (PMID: 31787755).

## Storage

**Storage:**

Store at -80°C.

**Storage Buffer:**

PBS only, pH7.3

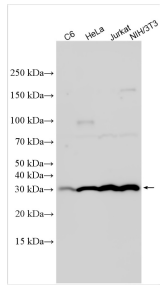
For technical support and original validation data for this product please contact:

T: 1 (888) 4PTGLAB (1-888-478-4522) (toll free in USA), or 1(312) 455-8498 (outside USA)

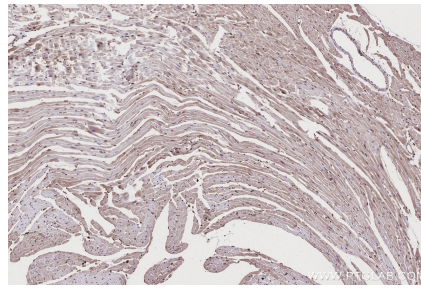
E: [proteintech@ptglab.com](mailto:proteintech@ptglab.com)  
W: [ptglab.com](http://ptglab.com)

**This product is exclusively available under Proteintech Group brand and is not available to purchase from any other manufacturer.**

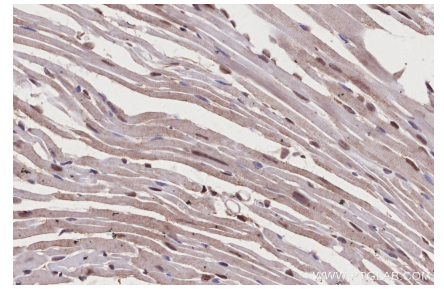
## Selected Validation Data



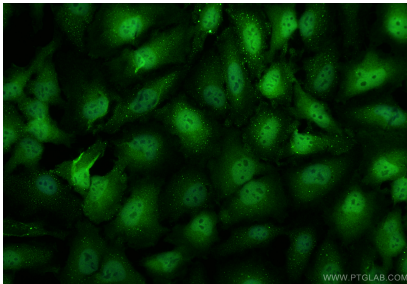
Various lysates were subjected to SDS PAGE followed by western blot with 31422-1-AP (NEK7 antibody) at dilution of 1:6000 incubated at room temperature for 1.5 hours. This data was developed using the same antibody clone with 31422-1-PBS in a different storage buffer formulation.



Immunohistochemical analysis of paraffin-embedded mouse heart tissue slide using 31422-1-AP (NEK7 antibody) at dilution of 1:500 (under 10x lens). Heat mediated antigen retrieval with Tris-EDTA buffer (pH 9.0). This data was developed using the same antibody clone with 31422-1-PBS in a different storage buffer formulation.



Immunohistochemical analysis of paraffin-embedded mouse heart tissue slide using 31422-1-AP (NEK7 antibody) at dilution of 1:500 (under 40x lens). Heat mediated antigen retrieval with Tris-EDTA buffer (pH 9.0). This data was developed using the same antibody clone with 31422-1-PBS in a different storage buffer formulation.



Immunofluorescent analysis of (4% PFA) fixed HeLa cells using NEK7 antibody (31422-1-AP) at dilution of 1:400 and CoraLite®488-Conjugated Goat Anti-Rabbit IgG(H+L) (SA00013-2). This data was developed using the same antibody clone with 31422-1-PBS in a different storage buffer formulation.