

For Research Use Only

SLC35B3 Polyclonal antibody

Catalog Number: 31436-1-AP



Basic Information

Catalog Number:

31436-1-AP

Size:

150ul , Concentration: 500 ug/ml by Nanodrop;

Source:

Rabbit

Isotype:

IgG

Immunogen Catalog Number:

AG34349

GenBank Accession Number:

BC006973

GeneID (NCBI):

51000

UNIPROT ID:

Q9H1N7

Full Name:

solute carrier family 35, member B3

Calculated MW:

401 aa, 45 kDa

Observed MW:

40, 32 kDa

Purification Method:

Antigen affinity Purification

Recommended Dilutions:

WB: 1:2000-1:12000

Applications

Tested Applications:

WB, ELISA

Species Specificity:

human

Positive Controls:

WB : L02 cells, MCF-7 cells, MDA-MB-231 cells, U2OS cells, MG-63 cells

Background Information

SLC35B3 (solute carrier family 35 member B3) is a member of the solute carrier family. SLC35B3 is involved in transporting 3-prime phosphoadenosine 5-prime phosphosulfate (PAPS) from the nucleus or the cytosol to the Golgi lumen. The observed MW of SLC35B3 is 40 kDa and 32 kDa, which is due to alternative splicing.

Storage

Storage:

Store at -20°C. Stable for one year after shipment.

Storage Buffer:

PBS with 0.02% sodium azide and 50% glycerol, pH7.3

Aliquoting is unnecessary for -20°C storage

*** 20ul sizes contain 0.1% BSA

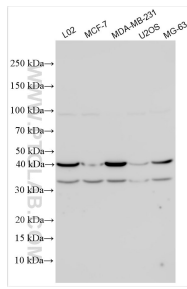
For technical support and original validation data for this product please contact:

T: 1 (888) 4PTGLAB (1-888-478-4522) (toll free in USA), or 1(312) 455-8498 (outside USA)

E: proteintech@ptglab.com
W: ptglab.com

This product is exclusively available under Proteintech Group brand and is not available to purchase from any other manufacturer.

Selected Validation Data



Various lysates were subjected to SDS PAGE followed by western blot with 31436-1-AP (SLC35B3 antibody) at dilution of 1:6000 incubated at room temperature for 1.5 hours.