

For Research Use Only

SLC8A2 Polyclonal antibody

Catalog Number: 31437-1-AP



Basic Information

Catalog Number: 31437-1-AP	GenBank Accession Number: NM_015063	Purification Method: Antigen affinity Purification
Size: 150ul , Concentration: 300 ug/ml by Nanodrop;	GeneID (NCBI): 6543	Recommended Dilutions: IHC 1:50-1:500 IF-P 1:50-1:500
Source: Rabbit	UNIPROT ID: Q9UPR5	
Isotype: IgG	Full Name: solute carrier family 8 (sodium/calcium exchanger), member 2	
Immunogen Catalog Number: AG34438	Calculated MW: 921 aa, 100 kDa	

Applications

Tested Applications: IHC, IF-P, ELISA	Positive Controls: IHC : rat kidney tissue, IF-P : rat cerebellum tissue,
Species Specificity: human, rat	
Note-IHC: suggested antigen retrieval with TE buffer pH 9.0; (*) Alternatively, antigen retrieval may be performed with citrate buffer pH 6.0	

Background Information

SLC8A2, or solute carrier family 8 member 2, belongs to the SLC8 gene family, which encodes sodium-calcium exchangers (NCX). These proteins are part of the CaCA (Ca²⁺/Cation Antiporter) superfamily and play a significant role in regulating Ca²⁺-dependent events in many cell types. SLC8A2 has been implicated in various diseases, such as heart failure, arrhythmia, cerebral ischemia, hypertension, diabetes, and muscle dystrophy.

Storage

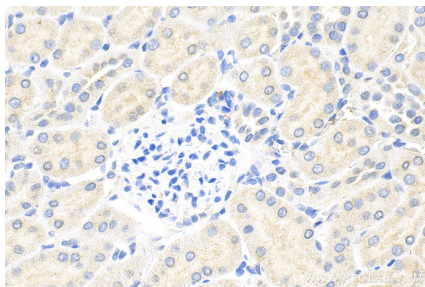
Storage:
Store at -20°C. Stable for one year after shipment.
Storage Buffer:
PBS with 0.02% sodium azide and 50% glycerol pH 7.3.
Aliquoting is unnecessary for -20°C storage

*** 20ul sizes contain 0.1% BSA

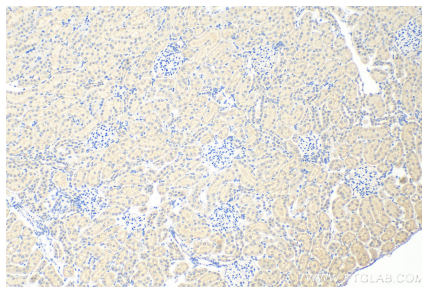
For technical support and original validation data for this product please contact:
T: 1 (888) 4PTGLAB (1-888-478-4522) (toll free in USA), or 1(312) 455-8498 (outside USA)
E: proteintech@ptglab.com
W: ptglab.com

This product is exclusively available under Proteintech Group brand and is not available to purchase from any other manufacturer.

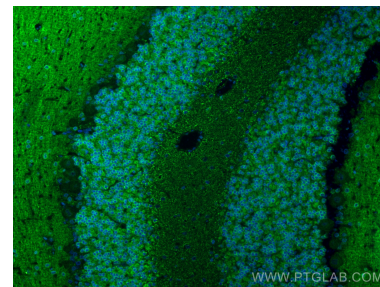
Selected Validation Data



Immunohistochemical analysis of paraffin-embedded rat kidney tissue slide using 31437-1-AP (SLC8A2 antibody) at dilution of 1:200 (under 40x lens). Heat mediated antigen retrieval with Tris-EDTA buffer (pH 9.0).



Immunohistochemical analysis of paraffin-embedded rat kidney tissue slide using 31437-1-AP (SLC8A2 antibody) at dilution of 1:200 (under 10x lens). Heat mediated antigen retrieval with Tris-EDTA buffer (pH 9.0).



Immunofluorescent analysis of (4% PFA) fixed paraffin-embedded rat cerebellum tissue using SLC8A2 antibody (31437-1-AP) at dilution of 1:200 and CoraLite®488-Conjugated Goat Anti-Rabbit IgG(H+L) (SA00013-2). Heat mediated antigen retrieval with Tris-EDTA buffer (pH 9.0).