

For Research Use Only

SLC8A2 Polyclonal antibody, PBS Only

Catalog Number: 31437-1-PBS



Basic Information

Catalog Number:

31437-1-PBS

Size:

100ug, Concentration: 1 mg/ml by Nanodrop;

Source:

Rabbit

Isotype:

IgG

Immunogen Catalog Number:

AG34438

GenBank Accession Number:

NM_015063

GeneID (NCBI):

6543

UNIPROT ID:

Q9UPR5

Full Name:

solute carrier family 8 (sodium/calcium exchanger), member 2

Calculated MW:

921 aa, 100 kDa

Purification Method:

Antigen affinity Purification

Applications

Tested Applications:

IHC, IF-P, Indirect ELISA

Species Specificity:

human, rat

Background Information

SLC8A2, or solute carrier family 8 member 2, belongs to the SLC8 gene family, which encodes sodium-calcium exchangers (NCX). These proteins are part of the CaCA (Ca²⁺/Cation Antiporter) superfamily and play a significant role in regulating Ca²⁺-dependent events in many cell types. SLC8A2 has been implicated in various diseases, such as heart failure, arrhythmia, cerebral ischemia, hypertension, diabetes, and muscle dystrophy.

Storage

Storage:

Store at -80°C.

Storage Buffer:

PBS Only

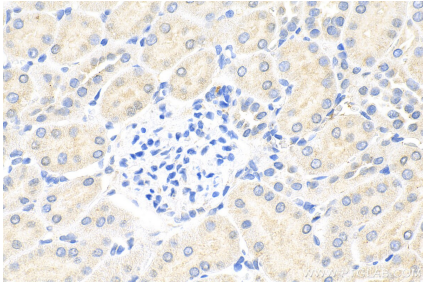
For technical support and original validation data for this product please contact:

T: 1 (888) 4PTGLAB (1-888-478-4522) (toll free in USA), or 1(312) 455-8498 (outside USA)

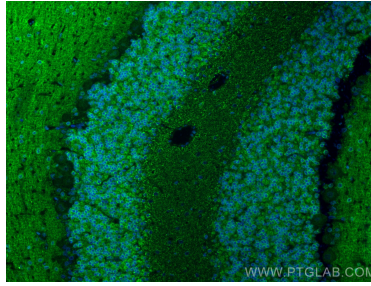
E: proteintech@ptglab.com
W: ptglab.com

This product is exclusively available under Proteintech Group brand and is not available to purchase from any other manufacturer.

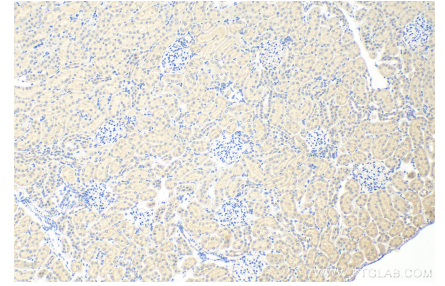
Selected Validation Data



Immunohistochemical analysis of paraffin-embedded rat kidney tissue slide using 31437-1-AP (SLC8A2 antibody) at dilution of 1:200 (under 40x lens). Heat mediated antigen retrieval with Tris-EDTA buffer (pH 9.0). This data was developed using the same antibody clone with 31437-1-PBS in a different storage buffer formulation.



Immunofluorescent analysis of (4% PFA) fixed paraffin-embedded rat cerebellum tissue using SLC8A2 antibody (31437-1-AP) at dilution of 1:200 and CoraLite®488-Conjugated Goat Anti-Rabbit IgG(H+L) (SA00013-2). Heat mediated antigen retrieval with Tris-EDTA buffer (pH 9.0). This data was developed using the same antibody clone with 31437-1-PBS in a different storage buffer formulation.



Immunohistochemical analysis of paraffin-embedded rat kidney tissue slide using 31437-1-AP (SLC8A2 antibody) at dilution of 1:200 (under 10x lens). Heat mediated antigen retrieval with Tris-EDTA buffer (pH 9.0). This data was developed using the same antibody clone with 31437-1-PBS in a different storage buffer formulation.