

For Research Use Only

TMEM109 Polyclonal antibody

Catalog Number: 31438-1-AP



Basic Information

Catalog Number:

31438-1-AP

Size:

150ul, Concentration: 350 ug/ml by Nanodrop;

Source:

Rabbit

Isotype:

IgG

Immunogen Catalog Number:

AG34866

GenBank Accession Number:

BC001309

GeneID (NCBI):

79073

UNIPROT ID:

Q9BVC6

Full Name:

transmembrane protein 109

Calculated MW:

26 kDa

Observed MW:

22 kDa

Purification Method:

Antigen affinity Purification

Recommended Dilutions:

WB 1:20000-1:100000

IHC 1:500-1:2000

IF-P 1:50-1:500

Applications

Tested Applications:

WB, IHC, IF-P, ELISA

Species Specificity:

human, mouse, rat

Note-IHC: suggested antigen retrieval with TE buffer pH 9.0; (*) Alternatively, antigen retrieval may be performed with citrate buffer pH 6.0

Positive Controls:

WB : mouse heart tissue, HeLa cells, U-251 cells, mouse skeletal muscle tissue, rat heart tissue, rat skeletal muscle tissue

IHC : mouse skeletal muscle tissue, mouse pancreas tissue

IF-P : mouse skeletal muscle tissue,

Background Information

TMEM109, also known as mg23 or mitsugumin-23, is a transmembrane protein localized to the sarcoplasmic/endoplasmic reticulum and nuclear membranes. TMEM109 is a ball-shaped cation channel in the sarcoplasmic reticulum (SR).

Storage

Storage:

Store at -20°C. Stable for one year after shipment.

Storage Buffer:

PBS with 0.02% sodium azide and 50% glycerol, pH7.3

Aliquoting is unnecessary for -20°C storage

*** 20ul sizes contain 0.1% BSA

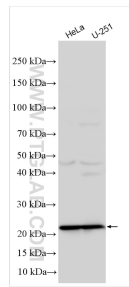
For technical support and original validation data for this product please contact:

T: 1 (888) 4PTGLAB (1-888-478-4522) (toll free in USA), or 1(312) 455-8498 (outside USA)

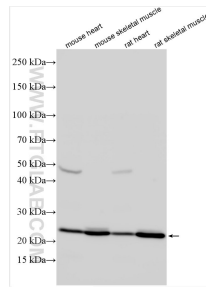
E: proteintech@ptglab.com
W: ptglab.com

This product is exclusively available under Proteintech Group brand and is not available to purchase from any other manufacturer.

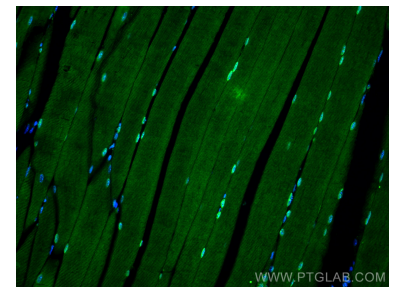
Selected Validation Data



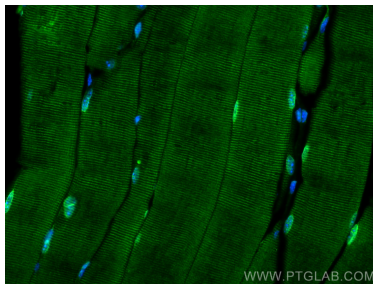
Various lysates were subjected to SDS PAGE followed by western blot with 31438-1-AP (TMEM109 antibody) at dilution of 1:15000 incubated at room temperature for 1.5 hours.



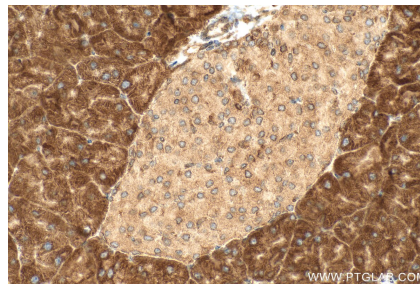
Various lysates were subjected to SDS PAGE followed by western blot with 31438-1-AP (TMEM109 antibody) at dilution of 1:60000 incubated at room temperature for 1.5 hours.



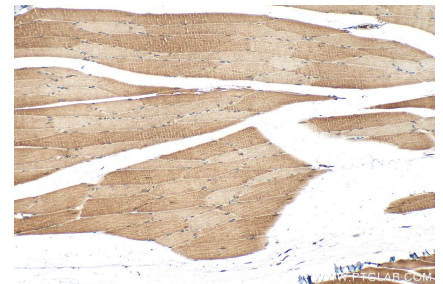
Immunofluorescent analysis of (4% PFA) fixed paraffin-embedded mouse skeletal muscle tissue using TMEM109 antibody (31438-1-AP) at dilution of 1:200 and CoraLite®488-Conjugated Goat Anti-Rabbit IgG(H+L) (SA00013-2). Heat mediated antigen retrieval with Tris-EDTA buffer (pH 9.0).



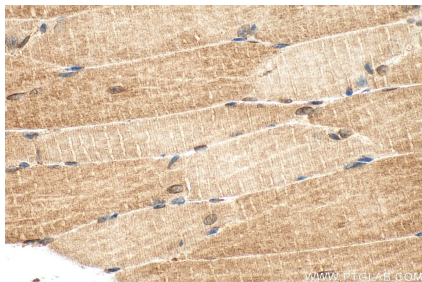
Immunofluorescent analysis of (4% PFA) fixed paraffin-embedded mouse skeletal muscle tissue using TMEM109 antibody (31438-1-AP) at dilution of 1:200 and CoraLite®488-Conjugated Goat Anti-Rabbit IgG(H+L) (SA00013-2). Heat mediated antigen retrieval with Tris-EDTA buffer (pH 9.0).



Immunohistochemical analysis of paraffin-embedded mouse pancreas tissue slide using 31438-1-AP (TMEM109 antibody) at dilution of 1:1000 (under 40x lens). Heat mediated antigen retrieval with Tris-EDTA buffer (pH 9.0).



Immunohistochemical analysis of paraffin-embedded mouse skeletal muscle tissue slide using 31438-1-AP (TMEM109 antibody) at dilution of 1:1000 (under 10x lens). Heat mediated antigen retrieval with Tris-EDTA buffer (pH 9.0).



Immunohistochemical analysis of paraffin-embedded mouse skeletal muscle tissue slide using 31438-1-AP (TMEM109 antibody) at dilution of 1:1000 (under 40x lens). Heat mediated antigen retrieval with Tris-EDTA buffer (pH 9.0).