

For Research Use Only

# WASF2 Polyclonal antibody

Catalog Number: 31442-1-AP

Featured Product



## Basic Information

### Catalog Number:

31442-1-AP

### Size:

150ul, Concentration: 450 ug/ml by Nanodrop;

### Source:

Rabbit

### Isotype:

IgG

### Immunogen Catalog Number:

AG35663

### GenBank Accession Number:

NM\_006990.4

### GeneID (NCBI):

10163

### UNIPROT ID:

Q9Y6W5

### Full Name:

WAS protein family, member 2

### Calculated MW:

54kDa 498aa

### Observed MW:

80 kDa

### Purification Method:

Antigen affinity Purification

### Recommended Dilutions:

WB 1:1000-1:6000

IHC 1:200-1:800

IF/ICC 1:50-1:500

## Applications

### Tested Applications:

WB, IHC, IF/ICC, ELISA

### Species Specificity:

human, mouse

**Note-IHC: suggested antigen retrieval with TE buffer pH 9.0; (\*) Alternatively, antigen retrieval may be performed with citrate buffer pH 6.0**

### Positive Controls:

**WB** : MDA-MB-231 cells, U2OS cells, K-562 cells, MCF-7 cells, PC-3 cells

**IHC** : human placenta tissue,

**IF/ICC** : U2OS cells,

## Background Information

WASF2 (WASp family Verprolin-homologous protein-2), also known as WAVE2, a member of the Wiskott-Aldrich syndrome protein (WASp) family of actin nucleation promoting factors, is a downstream effector molecule that implicates the signal transduction from small GTPases to the actin cytoskeleton, which can elongate the cell movement mode (PMID: 35849030,28332566). Moreover, WASF2 promoted the invasiveness of cancer cells by binding to actin cytoskeletal protein alpha-actinin 4 (ACTN4) (PMID: 30353690). The calculated MW of WASF2 is 54 kDa, with an isoform of 32 kDa, but the observed MW is about 80 kDa, which may be due to post-translational modification (PMID: 35849030,28332566,21383498,17389688,18362183,38391912).

## Storage

### Storage:

Store at -20°C. Stable for one year after shipment.

### Storage Buffer:

PBS with 0.02% sodium azide and 50% glycerol, pH7.3

Aliquoting is unnecessary for -20°C storage

\*\*\* 20ul sizes contain 0.1% BSA

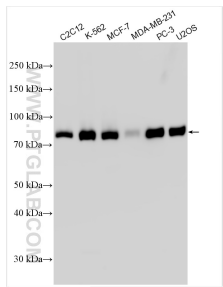
For technical support and original validation data for this product please contact:

T: 1 (888) 4PTGLAB (1-888-478-4522) (toll free in USA), or 1(312) 455-8498 (outside USA)

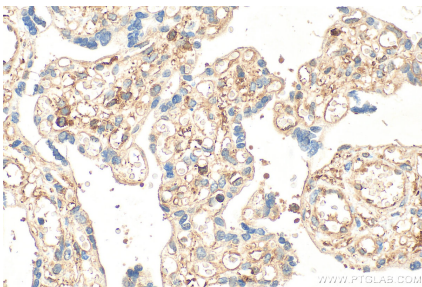
E: [proteintech@ptglab.com](mailto:proteintech@ptglab.com)  
W: [ptglab.com](http://ptglab.com)

This product is exclusively available under Proteintech Group brand and is not available to purchase from any other manufacturer.

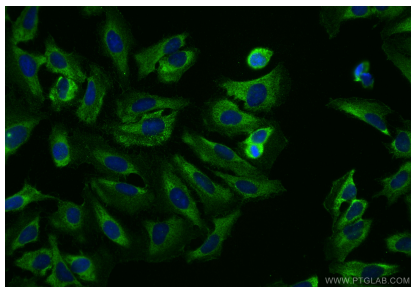
Selected Validation Data



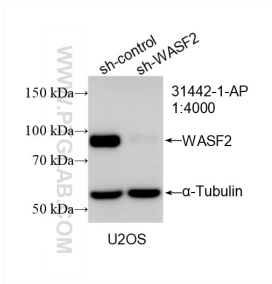
Various lysates were subjected to SDS PAGE followed by western blot with 31442-1-AP (WASF2 antibody) at dilution of 1:3000 incubated at room temperature for 1.5 hours.



Immunohistochemical analysis of paraffin-embedded human placenta tissue slide using 31442-1-AP (WASF2 antibody) at dilution of 1:400 (under 40x Lens). Heat mediated antigen retrieval with Tris-EDTA buffer (pH 9.0).



Immunofluorescent analysis of (-20°C Ethanol) fixed U2OS cells using WASF2 antibody (31442-1-AP) at dilution of 1:200 and CoraLite®488-Conjugated Goat Anti-Rabbit IgG(H+L) (SA00013-2).



WB result of WASF2 antibody (31442-1-AP; 1:4000; incubated at room temperature for 1.5 hours) with sh-Control and sh-WASF2 transfected U2OS cells.