

For Research Use Only

# WASF2 Polyclonal antibody, PBS Only

Catalog Number: 31442-1-PBS

Featured Product



## Basic Information

**Catalog Number:**

31442-1-PBS

**Size:**

100ug, Concentration: 1 mg/ml by Nanodrop;

**Source:**

Rabbit

**Isotype:**

IgG

**Immunogen Catalog Number:**

AG35663

**GenBank Accession Number:**

NM\_006990.4

**GeneID (NCBI):**

10163

**UNIPROT ID:**

Q9Y6W5

**Full Name:**

WAS protein family, member 2

**Calculated MW:**

54kDa 498aa

**Observed MW:**

80 kDa

**Purification Method:**

Antigen affinity Purification

## Applications

**Tested Applications:**

WB, IHC, IF/ICC, Indirect ELISA

**Species Specificity:**

human, mouse

## Background Information

WASF2 (WASp family Verprolin-homologous protein-2), also known as WAVE2, a member of the Wiskott-Aldrich syndrome protein (WASp) family of actin nucleation promoting factors, is a downstream effector molecule that implicates the signal transduction from small GTPases to the actin cytoskeleton, which can elongate the cell movement mode (PMID: 35849030,28332566). Moreover, WASF2 promoted the invasiveness of cancer cells by binding to actin cytoskeletal protein alpha-actinin 4 (ACTN4) (PMID: 30353690). The calculated MW of WASF2 is 54 kDa, with an isoform of 32 kDa, but the observed MW is about 80 kDa, which may be due to post-translational modification (PMID: 35849030,28332566,21383498,17389688,18362183,38391912).

## Storage

**Storage:**

Store at -80°C.

**Storage Buffer:**

PBS only, pH7.3

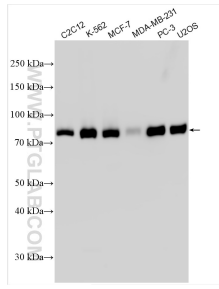
For technical support and original validation data for this product please contact:

T: 1 (888) 4PTGLAB (1-888-478-4522) (toll free in USA), or 1(312) 455-8498 (outside USA)

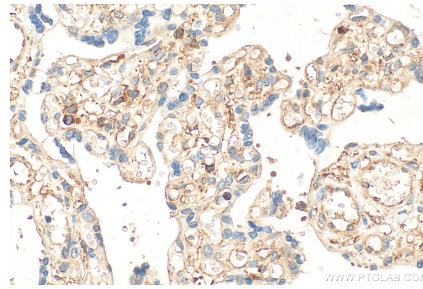
E: [proteintech@ptglab.com](mailto:proteintech@ptglab.com)  
W: [ptglab.com](http://ptglab.com)

This product is exclusively available under Proteintech Group brand and is not available to purchase from any other manufacturer.

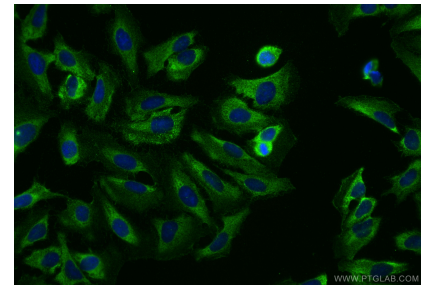
## Selected Validation Data



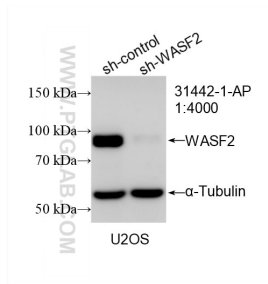
Various lysates were subjected to SDS PAGE followed by western blot with 31442-1-AP (WASF2 antibody) at dilution of 1:3000 incubated at room temperature for 1.5 hours. This data was developed using the same antibody clone with 31442-1-PBS in a different storage buffer formulation.



Immunohistochemical analysis of paraffin-embedded human placenta tissue slide using 31442-1-AP (WASF2 antibody) at dilution of 1:400 (under 40x lens). Heat mediated antigen retrieval with Tris-EDTA buffer (pH 9.0). This data was developed using the same antibody clone with 31442-1-PBS in a different storage buffer formulation.



Immunofluorescent analysis of (-20°C Ethanol) fixed U2OS cells using WASF2 antibody (31442-1-AP) at dilution of 1:200 and CoraLite®488-Conjugated Goat Anti-Rabbit IgG(H+L) (SA00013-2). This data was developed using the same antibody clone with 31442-1-PBS in a different storage buffer formulation.



WB result of WASF2 antibody (31442-1-AP; 1:4000; incubated at room temperature for 1.5 hours) with sh-Control and sh-WASF2 transfected U2OS cells. This data was developed using the same antibody clone with 31442-1-PBS in a different storage buffer formulation.