

For Research Use Only

PDIA2 Polyclonal antibody, PBS Only

Catalog Number: 31458-1-PBS



Basic Information

Catalog Number:

31458-1-PBS

Size:

100ug , Concentration: 1 mg/ml by Nanodrop;

Source:

Rabbit

Isotype:

IgG

Immunogen Catalog Number:

AG35301

GenBank Accession Number:

NM_006849.2

GeneID (NCBI):

64714

UNIPROT ID:

Q13087

Full Name:

protein disulfide isomerase family A, member 2

Calculated MW:

58 kDa

Observed MW:

60-65 kDa

Purification Method:

Antigen affinity Purification

Applications

Tested Applications:

WB, Indirect ELISA

Species Specificity:

human, mouse, rat

Background Information

PDIA2 (Protein disulfide-isomerase A2), a member of PDI family, is an ER protein chaperone that catalyzes the formation and breakage of disulfide bonds between cysteine residues and can inhibit aggregation of misfolded proteins by catalyzing rearrangement of -S-S- bonds in proteins. (PMID: 23486466)

Storage

Storage:

Store at -80°C.

Storage Buffer:

PBS only, pH7.3

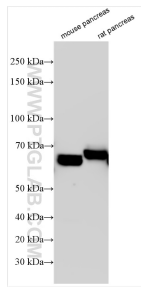
For technical support and original validation data for this product please contact:

T: 1 (888) 4PTGLAB (1-888-478-4522) (toll free in USA), or 1(312) 455-8498 (outside USA)

E: proteintech@ptglab.com
W: ptglab.com

This product is exclusively available under Proteintech Group brand and is not available to purchase from any other manufacturer.

Selected Validation Data



Various lysates were subjected to SDS PAGE followed by western blot with 31458-1-AP (PDIA2 antibody) at dilution of 1:15000 incubated at room temperature for 1.5 hours. This data was developed using the same antibody clone with 31458-1-PBS in a different storage buffer formulation.