

For Research Use Only

C1orf122 Polyclonal antibody

Catalog Number: 31471-1-AP

Featured Product



Basic Information

Catalog Number:

31471-1-AP

Size:

150ul, Concentration: 760 ug/ml by Nanodrop;

Source:

Rabbit

Isotype:

IgG

Immunogen Catalog Number:

AG35685

GenBank Accession Number:

NM_198446.2

GeneID (NCBI):

127687

UNIPROT ID:

Q6ZS38

Full Name:

chromosome 1 open reading frame 122

Calculated MW:

11kDa 110aa

Observed MW:

25 kDa

Purification Method:

Antigen affinity Purification

Recommended Dilutions:

WB: 1:500-1:3000

Applications

Tested Applications:

WB, ELISA

Species Specificity:

human

Positive Controls:

WB : HEK-293 cells, HeLa cells, MCF-7 cells

Background Information

C1orf122 (also known as ALAESM) is a lysosomal transmembrane protein and a member of the α/β hydrolase superfamily. It catalyzes the deacylation of cardiolipin to generate monolysocardiolipin (MLCL) within cells, serving as a key node in the mitochondrial cardiolipin remodeling pathway. Clinical multi-omics studies have revealed its significant overexpression in more than ten types of tumors, including hepatocellular carcinoma, glioma, and gastric cancer, which is closely associated with shorter patient survival, immune infiltration, and activation of DNA damage repair pathways. In vitro experiments have confirmed that it promotes cancer cell proliferation and migration by inhibiting apoptosis, inducing epithelial-mesenchymal transition (EMT), and activating the PI3K/AKT/GSK3 β -SRPK1 axis. It is regarded as a potential independent prognostic biomarker and therapeutic target.

Storage

Storage:

Store at -20°C. Stable for one year after shipment.

Storage Buffer:

PBS with 0.02% sodium azide and 50% glycerol, pH7.3

Aliquoting is unnecessary for -20°C storage

*** 20ul sizes contain 0.1% BSA

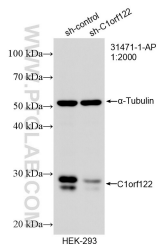
For technical support and original validation data for this product please contact:

T: 1 (888) 4PTGLAB (1-888-478-4522) (toll free in USA), or 1(312) 455-8498 (outside USA)

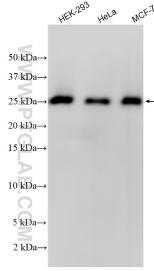
E: proteintech@ptglab.com
W: ptglab.com

This product is exclusively available under Proteintech Group brand and is not available to purchase from any other manufacturer.

Selected Validation Data



WB result of C1orf122 antibody (31471-1-AP; 1:2000; incubated at room temperature for 1.5 hours) with sh-Control and sh-C1orf122 transfected HEK-293 cells.



Various lysates were subjected to SDS PAGE followed by western blot with 31471-1-AP (C1orf122 antibody) at dilution of 1:1500 incubated at room temperature for 1.5 hours.