

For Research Use Only

# C1orf122 Polyclonal antibody, PBS Only

Catalog Number: 31471-1-PBS



## Basic Information

<b>Catalog Number:</b> 31471-1-PBS	<b>GenBank Accession Number:</b> NM_198446.2	<b>Purification Method:</b> Antigen affinity Purification
<b>Size:</b> 100ug, Concentration: 1 mg/ml by Nanodrop;	<b>GeneID (NCBI):</b> 127687	
<b>Source:</b> Rabbit	<b>UNIPROT ID:</b> Q6Z5J8	
<b>Isotype:</b> IgG	<b>Full Name:</b> chromosome 1 open reading frame 122	
<b>Immunogen Catalog Number:</b> AG35685	<b>Calculated MW:</b> 11kDa 110aa	
	<b>Observed MW:</b> 25 kDa	

## Applications

**Tested Applications:**  
WB, Indirect ELISA

**Species Specificity:**  
human

## Background Information

C1orf122 (also known as ALAESM) is a lysosomal transmembrane protein and a member of the  $\alpha/\beta$  hydrolase superfamily. It catalyzes the deacylation of cardiolipin to generate monolysocardiolipin (MLCL) within cells, serving as a key node in the mitochondrial cardiolipin remodeling pathway. Clinical multi-omics studies have revealed its significant overexpression in more than ten types of tumors, including hepatocellular carcinoma, glioma, and gastric cancer, which is closely associated with shorter patient survival, immune infiltration, and activation of DNA damage repair pathways. In vitro experiments have confirmed that it promotes cancer cell proliferation and migration by inhibiting apoptosis, inducing epithelial-mesenchymal transition (EMT), and activating the PI3K/AKT/GSK3 $\beta$ -SRPK1 axis. It is regarded as a potential independent prognostic biomarker and therapeutic target.

## Storage

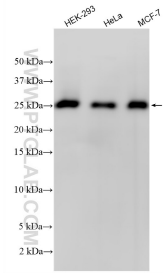
**Storage:**  
Store at -80°C.

**Storage Buffer:**  
PBS only, pH7.3

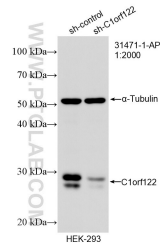
For technical support and original validation data for this product please contact:  
T: 1 (888) 4PTGLAB (1-888-478-4522) (toll free in USA), or 1(312) 455-8498 (outside USA)      E: proteintech@ptglab.com  
W: ptglab.com

This product is exclusively available under Proteintech Group brand and is not available to purchase from any other manufacturer.

## Selected Validation Data



Various lysates were subjected to SDS PAGE followed by western blot with 31471-1-AP (C1orf122 antibody) at dilution of 1:1500 incubated at room temperature for 1.5 hours. This data was developed using the same antibody clone with 31471-1-PBS in a different storage buffer formulation.



WB result of C1orf122 antibody (31471-1-AP; 1:2000; incubated at room temperature for 1.5 hours) with sh-Control and sh-C1orf122 transfected HEK-293 cells. This data was developed using the same antibody clone with 31471-1-PBS in a different storage buffer formulation.