

For Research Use Only

EPPK1 Polyclonal antibody, PBS Only

Catalog Number: 31475-1-PBS



Basic Information

Catalog Number:

31475-1-PBS

Size:

100ug , Concentration: 1 mg/ml by Nanodrop;

Source:

Rabbit

Isotype:

IgG

Immunogen Catalog Number:

AG35749

GenBank Accession Number:

NM_031308.3

GeneID (NCBI):

83481

UNIPROT ID:

P58107

Full Name:

epiplakin 1

Calculated MW:

555 kDa

Observed MW:

500-600 kDa

Purification Method:

Antigen affinity Purification

Applications

Tested Applications:

WB, Indirect ELISA

Species Specificity:

human

Background Information

Epplakin 1 (EPPK1), belonging to the plakin family, is involved in connecting intermediate filaments and regulating their reorganization in stress response. Studies have shown that EPPK1 is involved in the progression of various cancers, such as liver cancer, cervical cancer, and bladder urothelial carcinoma.

Storage

Storage:

Store at -80°C.

Storage Buffer:

PBS Only

For technical support and original validation data for this product please contact:

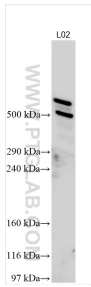
T: 1 (888) 4PTGLAB (1-888-478-4522) (toll free in USA), or 1(312) 455-8498 (outside USA)

E: proteintech@ptglab.com

W: ptglab.com

This product is exclusively available under Proteintech Group brand and is not available to purchase from any other manufacturer.

Selected Validation Data



L02 cells were subjected to Tris-acetate gel system followed by western blot with 31475-1-AP (EPPK1 antibody) at dilution of 1:800 incubated at room temperature for 1.5 hours. This data was developed using the same antibody clone with 31475-1-PBS in a different storage buffer formulation.