

For Research Use Only

SEL1L3 Polyclonal antibody

Catalog Number: 31489-1-AP



Basic Information

Catalog Number: 31489-1-AP	GenBank Accession Number: BC060867	Purification Method: Antigen affinity Purification
Size: 150ul , Concentration: 780 ug/ml by Nanodrop;	GeneID (NCBI): 23231	Recommended Dilutions: WB: 1:500-1:2000 IP: 0.5-4.0 ug for 1.0-3.0 mg of total protein lysate IHC: 1:200-1:800
Source: Rabbit	UNIPROT ID: Q68CR1	
Isotype: IgG	Full Name: KIAA0746 protein	
Immunogen Catalog Number: AG34856	Observed MW: 129 kDa	

Applications

Tested Applications: WB, IHC, IP, ELISA	Positive Controls: WB : Daudi cells, Ramos cells, U-251 cells IP : Daudi cells, U-251 cells IHC : human colon cancer tissue,
Species Specificity: human	
Note-IHC: suggested antigen retrieval with TE buffer pH 9.0; (*) Alternatively, antigen retrieval may be performed with citrate buffer pH 6.0	

Background Information

SEL1L3 is also named suppressor of lin-12-like protein 3. SEL1L3, a protein with multiple glycosylation sites, was identified as the BCR target in 3/20 PVRL cases. SEL1L3 induces proliferation and BCR pathway activation in aggressive lymphoma cell lines. Moreover, SEL1L3 conjugated to a toxin killed exclusively lymphoma cells with respective BCR-reactivity (PMID: 38671086).

Storage

Storage:
Store at -20°C. Stable for one year after shipment.
Storage Buffer:
PBS with 0.02% sodium azide and 50% glycerol, pH7.3
Aliquoting is unnecessary for -20°C storage

*** 20ul sizes contain 0.1% BSA

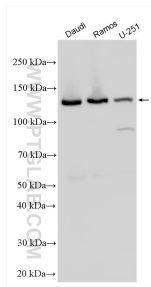
For technical support and original validation data for this product please contact:

T: 1 (888) 4PTGLAB (1-888-478-4522) (toll free in USA), or 1(312) 455-8498 (outside USA)

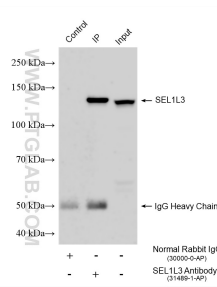
E: proteintech@ptglab.com
W: ptglab.com

This product is exclusively available under Proteintech Group brand and is not available to purchase from any other manufacturer.

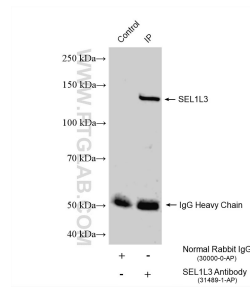
Selected Validation Data



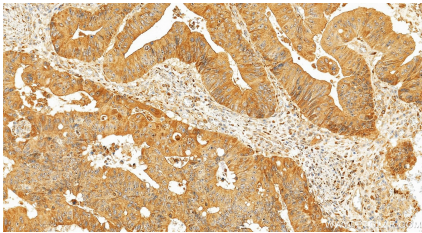
Various lysates were subjected to SDS PAGE followed by western blot with 31489-1-AP (SEL1L3 antibody) at dilution of 1:1000 incubated at room temperature for 1.5 hours.



IP result of anti-SEL1L3 (IP:31489-1-AP, 4ug; Detection:31489-1-AP 1:1000) with Daudi cells lysate 1600 ug.



IP result of anti-SEL1L3 (IP:31489-1-AP, 4ug; Detection:31489-1-AP 1:1000) with U-251 cells lysate 1320 ug.



Immunohistochemical analysis of paraffin-embedded human colon cancer tissue slide using 31489-1-AP (SEL1L3 antibody) at dilution of 1:400 (under 20x lens). Heat mediated antigen retrieval with Tris-EDTA buffer (pH 9.0).