

For Research Use Only

SEL1L3 Polyclonal antibody, PBS Only

Catalog Number: 31489-1-PBS



Basic Information

Catalog Number: 31489-1-PBS	GenBank Accession Number: BC060867	Purification Method: Antigen affinity Purification
Size: 100ug , Concentration: 1 mg/ml by Nanodrop;	GeneID (NCBI): 23231	
Source: Rabbit	UNIPROT ID: Q68CR1	
Isotype: IgG	Full Name: KIAA0746 protein	
Immunogen Catalog Number: AG34856	Observed MW: 129 kDa	

Applications

Tested Applications:
WB, IHC, IP, Indirect ELISA

Species Specificity:
human

Background Information

SEL1L3 is also named suppressor of lin-12-like protein 3. SEL1L3, a protein with multiple glycosylation sites, was identified as the BCR target in 3/20 PVRL cases. SEL1L3 induces proliferation and BCR pathway activation in aggressive lymphoma cell lines. Moreover, SEL1L3 conjugated to a toxin killed exclusively lymphoma cells with respective BCR-reactivity (PMID: 38671086).

Storage

Storage:
Store at -80°C.

Storage Buffer:
PBS only, pH7.3

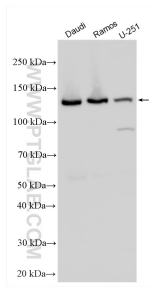
For technical support and original validation data for this product please contact:

T: 1 (888) 4PTGLAB (1-888-478-4522) (toll free
in USA), or 1(312) 455-8498 (outside USA)

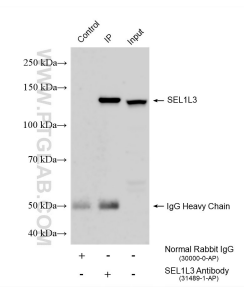
E: proteintech@ptglab.com
W: ptglab.com

This product is exclusively available under Proteintech Group brand and is not available to purchase from any other manufacturer.

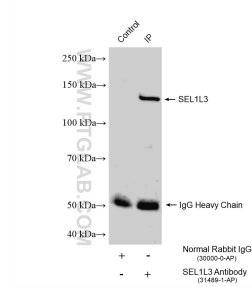
Selected Validation Data



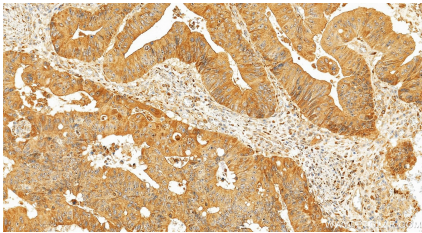
Various lysates were subjected to SDS PAGE followed by western blot with 31489-1-AP (SEL1L3 antibody) at dilution of 1:1000 incubated at room temperature for 1.5 hours. This data was developed using the same antibody clone with 31489-1-PBS in a different storage buffer formulation.



IP result of anti-SEL1L3 (IP:31489-1-AP, 4ug; Detection:31489-1-AP 1:1000) with Daudi cells lysate 1600 ug. This data was developed using the same antibody clone with 31489-1-PBS in a different storage buffer formulation.



IP result of anti-SEL1L3 (IP:31489-1-AP, 4ug; Detection:31489-1-AP 1:1000) with U-251 cells lysate 1320 ug. This data was developed using the same antibody clone with 31489-1-PBS in a different storage buffer formulation.



Immunohistochemical analysis of paraffin-embedded human colon cancer tissue slide using 31489-1-AP (SEL1L3 antibody) at dilution of 1:400 (under 20x lens). Heat mediated antigen retrieval with Tris-EDTA buffer (pH 9.0). This data was developed using the same antibody clone with 31489-1-PBS in a different storage buffer formulation.