

For Research Use Only

FAT2 Polyclonal antibody

Catalog Number: 31490-1-AP



Basic Information

Catalog Number: 31490-1-AP	GenBank Accession Number: NM_001447	Purification Method: Antigen affinity Purification
Size: 150ul , Concentration: 450 ug/ml by Nanodrop;	GeneID (NCBI): 2196	Recommended Dilutions: WB 1:500-1:1000
Source: Rabbit	UNIPROT ID: Q9NYQ8	
Isotype: IgG	Full Name: FAT tumor suppressor homolog 2 (Drosophila)	
Immunogen Catalog Number: AG34942	Calculated MW: 479 kDa	
	Observed MW: 500-600 kDa	

Applications

Tested Applications: WB, ELISA	Positive Controls: WB : A431 cells,
Species Specificity: human	

Background Information

FAT2 (FAT atypical cadherin 2), also known as CDHF8. The gene product is a member of the cadherin superfamily, a group of integral membrane proteins characterized by the presence of cadherin-type repeats. This protein most likely functions as a cell adhesion molecule, controlling cell proliferation and playing an important role in cerebellum development. Expressed in epidermal keratinocytes, infant brain, cerebellum, and also in a variety of tumors, such as pancreatic cancer, diffuse type gastric cancer, ovarian cancer, esophageal cancer, skin squamous cell carcinoma, head and neck cancer. Not expressed in melanoma cell line A375 cells, normal epidermal melanocytes or normal dermal fibroblasts. Expressed in epidermal keratinocytes and squamous cell carcinoma (at protein level). The molecular weight of FAT2 is 473 kDa. The huge molecular masses (about 500-600 kDa) have hindered studies of the molecular aspects of its roles (PMID: 15923647).

Storage

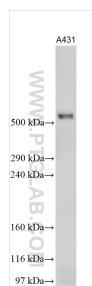
Storage:
Store at -20°C. Stable for one year after shipment.
Storage Buffer:
PBS with 0.02% sodium azide and 50% glycerol pH 7.3.
Aliquoting is unnecessary for -20°C storage

*** 20ul sizes contain 0.1% BSA

For technical support and original validation data for this product please contact:
T: 1 (888) 4PTGLAB (1-888-478-4522) (toll free in USA), or 1(312) 455-8498 (outside USA)
E: proteintech@ptglab.com
W: ptglab.com

This product is exclusively available under Proteintech Group brand and is not available to purchase from any other manufacturer.

Selected Validation Data



Various lysates were subjected to SDS PAGE followed by western blot with 31490-1-AP (FAT2 antibody) at dilution of 1:600 incubated at room temperature for 1.5 hours.