

For Research Use Only

# PROSER1 Polyclonal antibody

Catalog Number: 31494-1-AP



## Basic Information

**Catalog Number:**

31494-1-AP

**Size:**

150ul, Concentration: 280 ug/ml by Nanodrop;

**Source:**

Rabbit

**Isotype:**

IgG

**Immunogen Catalog Number:**

AG35678

**GenBank Accession Number:**

NM\_025138.4

**GeneID (NCBI):**

80209

**UNIPROT ID:**

Q86XN7

**Full Name:**

chromosome 13 open reading frame 23

**Calculated MW:**

96kDa 944aa

**Observed MW:**

100 kDa

**Purification Method:**

Antigen affinity Purification

**Recommended Dilutions:**

IP: 0.5-4.0 ug for 1.0-3.0 mg of total protein lysate

IHC: 1:50-1:500

IF/ICC: 1:50-1:500

## Applications

**Tested Applications:**

IHC, IF/ICC, IP, ELISA

**Species Specificity:**

human

**Note-IHC: suggested antigen retrieval with TE buffer pH 9.0; (\*) Alternatively, antigen retrieval may be performed with citrate buffer pH 6.0**

**Positive Controls:**

IP: Jurkat cells,

IHC: human ovary tumor tissue,

IF/ICC: U2OS cells,

## Background Information

PROSER1 (proline- and serine-rich 1) is a chromatin-binding protein encoded by the 13q13.3 locus. It interacts with all three TET enzymes and serves as the core scaffold of the TOPD (TET-OGT-PROSER1-DBHS) complex, stabilizing the binding between TET2 and OGT while promoting O-GlcNAcylation, thereby enhancing DNA demethylation activity. PROSER1 has recently been found to be associated with neurodevelopmental disorders.

## Storage

**Storage:**

Store at -20°C. Stable for one year after shipment.

**Storage Buffer:**

PBS with 0.02% sodium azide and 50% glycerol, pH7.3

Aliquoting is unnecessary for -20°C storage

\*\*\* 20ul sizes contain 0.1% BSA

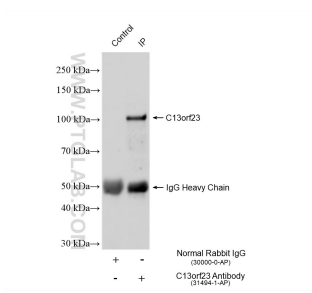
For technical support and original validation data for this product please contact:

T: 1 (888) 4PTGLAB (1-888-478-4522) (toll free in USA), or 1(312) 455-8498 (outside USA)

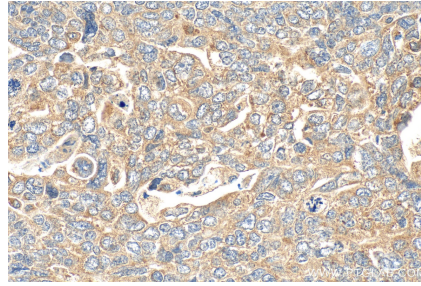
E: [proteintech@ptglab.com](mailto:proteintech@ptglab.com)  
W: [ptglab.com](http://ptglab.com)

This product is exclusively available under Proteintech Group brand and is not available to purchase from any other manufacturer.

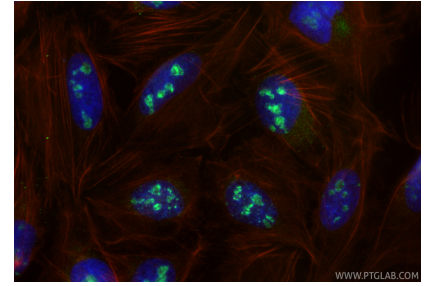
## Selected Validation Data



IP result of anti-C13orf23 (IP:31494-1-AP, 4ug; Detection:31494-1-AP 1:500) with Jurkat cells lysate 1800 ug.



Immunohistochemical analysis of paraffin-embedded human ovary tumor tissue slide using 31494-1-AP (C13orf23 antibody) at dilution of 1:200 (under 40x lens). Heat mediated antigen retrieval with Tris-EDTA buffer (pH 9.0).



Immunofluorescent analysis of (4% PFA) fixed U2OS cells using PROSER1 antibody (31494-1-AP) at dilution of 1:200 and Coralite®488-Conjugated Goat Anti-Rabbit IgG(H+L) (SA00013-2), CL594-Phalloidin (red).