

For Research Use Only

# ARSE Polyclonal antibody, PBS Only

Catalog Number: 31522-1-PBS



## Basic Information

**Catalog Number:**

31522-1-PBS

**Size:**

100ug, Concentration: 1 mg/ml by Nanodrop;

**Source:**

Rabbit

**Isotype:**

IgG

**Immunogen Catalog Number:**

AG24371

**GenBank Accession Number:**

BC130438

**GeneID (NCBI):**

415

**UNIPROT ID:**

P51690

**Full Name:**

arylsulfatase E (chondrodysplasia punctata 1)

**Purification Method:**

Antigen affinity Purification

## Applications

**Tested Applications:**

IHC, IF/ICC, Indirect ELISA

**Species Specificity:**

human, mouse

## Background Information

ARSE (arylsulfatase E), is a member of the sulfatase family. This enzyme is glycosylated post-translationally. Sulfatases, including ARSE, are essential for the correct composition of the bone and cartilage matrix.

## Storage

**Storage:**

Store at -80°C.

**Storage Buffer:**

PBS Only

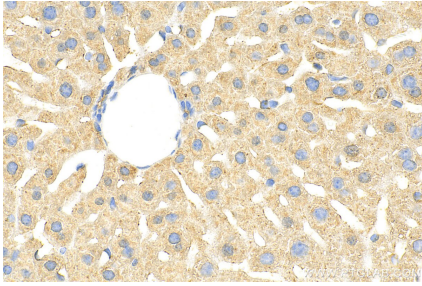
For technical support and original validation data for this product please contact:

T: 1 (888) 4PTGLAB (1-888-478-4522) (toll free in USA), or 1(312) 455-8498 (outside USA)

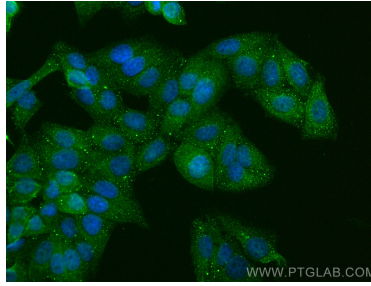
E: [proteintech@ptglab.com](mailto:proteintech@ptglab.com)  
W: [ptglab.com](http://ptglab.com)

This product is exclusively available under Proteintech Group brand and is not available to purchase from any other manufacturer.

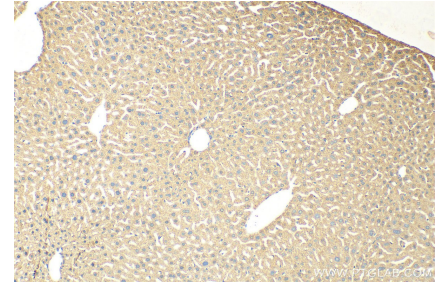
## Selected Validation Data



Immunohistochemical analysis of paraffin-embedded mouse liver tissue slide using 31522-1-AP (ARSE antibody) at dilution of 1:200 (under 40x lens). Heat mediated antigen retrieval with Tris-EDTA buffer (pH 9.0). This data was developed using the same antibody clone with 31522-1-PBS in a different storage buffer formulation.



Immunofluorescent analysis of (4% PFA) fixed HepG2 cells using ARSE antibody (31522-1-AP) at dilution of 1:400 and Multi-rAb CoraLite® Plus 488-Goat Anti-Rabbit Recombinant Secondary Antibody (H+L) (RGAR002). This data was developed using the same antibody clone with 31522-1-PBS in a different storage buffer formulation.



Immunohistochemical analysis of paraffin-embedded mouse liver tissue slide using 31522-1-AP (ARSE antibody) at dilution of 1:200 (under 10x lens). Heat mediated antigen retrieval with Tris-EDTA buffer (pH 9.0). This data was developed using the same antibody clone with 31522-1-PBS in a different storage buffer formulation.