

For Research Use Only

# CDC42BPB Polyclonal antibody

Catalog Number: 31526-1-AP



## Basic Information

Catalog Number:

31526-1-AP

Size:

150ul , Concentration: 400 ug/ml by Nanodrop;

Source:

Rabbit

Isotype:

IgG

Immunogen Catalog Number:

AG35745

GenBank Accession Number:

NM\_006035.3

GeneID (NCBI):

9578

UNIPROT ID:

Q9Y5S2

Full Name:

CDC42 binding protein kinase beta (DMPK-like)

Calculated MW:

194 kDa

Observed MW:

194 kDa

Purification Method:

Antigen affinity Purification

Recommended Dilutions:

WB 1:500-1:1000

## Applications

Tested Applications:

WB, ELISA

Species Specificity:

Human

Positive Controls:

WB : HEK-293T cells, HeLa cells, U-251 cells

## Background Information

CDC42BPB is a serine/threonine protein kinase and codes for MRCK $\beta$  (myotonic dystrophy-related Cdc42-binding kinase beta), a regulator of cell cytoskeletal reorganization and cell migration. CDC42BPB shows expression in the granule cell layer of the lateral adult cerebellum, which has been associated with cognitive functions, and has recently been associated with neurodevelopmental disorders including ASD (autism spectrum disorder). (PMID: 35942939)

## Storage

Storage:

Store at -20°C. Stable for one year after shipment.

Storage Buffer:

PBS with 0.02% sodium azide and 50% glycerol pH 7.3.

Aliquoting is unnecessary for -20°C storage

\*\*\* 20ul sizes contain 0.1% BSA

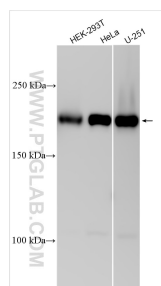
For technical support and original validation data for this product please contact:

T: 1 (888) 4PTGLAB (1-888-478-4522) (toll free in USA), or 1(312) 455-8498 (outside USA)

E: [proteintech@ptglab.com](mailto:proteintech@ptglab.com)  
W: [ptglab.com](http://ptglab.com)

This product is exclusively available under Proteintech Group brand and is not available to purchase from any other manufacturer.

## Selected Validation Data



Various lysates were subjected to SDS PAGE followed by western blot with 31526-1-AP (CDC 42BPB antibody) at dilution of 1:800 incubated at room temperature for 1.5 hours.