

For Research Use Only

# PPP1R21 Polyclonal antibody

Catalog Number: 31532-1-AP



## Basic Information

<b>Catalog Number:</b> 31532-1-AP	<b>GenBank Accession Number:</b> BC111059	<b>Purification Method:</b> Antigen affinity Purification
<b>Size:</b> 150ul , Concentration: 250 ug/ml by Nanodrop;	<b>GeneID (NCBI):</b> 129285	<b>Recommended Dilutions:</b> WB 1:5000-1:50000
<b>Source:</b> Rabbit	<b>UNIPROT ID:</b> Q6ZMI0	IHC 1:500-1:2000
<b>Isotype:</b> IgG	<b>Full Name:</b> KLRAQ motif containing 1	IF-P 1:200-1:800
<b>Immunogen Catalog Number:</b> AG35449	<b>Observed MW:</b> 88 kDa	

## Applications

<b>Tested Applications:</b> WB, IHC, IF-P, ELISA	<b>Positive Controls:</b>
<b>Species Specificity:</b> human, mouse	<b>WB :</b> MCF-7 cells, THP-1 cells
<b>Note-IHC:</b> suggested antigen retrieval with <b>TE buffer pH 9.0; (*) Alternatively, antigen retrieval may be performed with citrate buffer pH 6.0</b>	<b>IHC :</b> human stomach cancer tissue,
	<b>IF-P :</b> mouse cerebellum tissue,

## Background Information

PPP1R21, also known as KLRAQ1, CCDC12 and FERRY2, encodes a conserved protein involved in endosomal maturation. It has many isoforms and may play a role in the endosomal sorting process or in the endosome maturation pathway.

## Storage

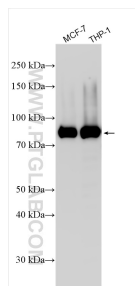
**Storage:**  
Store at -20°C. Stable for one year after shipment.  
**Storage Buffer:**  
PBS with 0.02% sodium azide and 50% glycerol pH 7.3.  
**Aliquoting is unnecessary for -20°C storage**

\*\*\* 20ul sizes contain 0.1% BSA

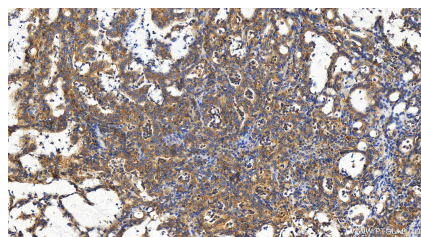
For technical support and original validation data for this product please contact:  
T: 1 (888) 4PTGLAB (1-888-478-4522) (toll free in USA), or 1(312) 455-8498 (outside USA)  
E: [proteintech@ptglab.com](mailto:proteintech@ptglab.com)  
W: [ptglab.com](http://ptglab.com)

This product is exclusively available under Proteintech Group brand and is not available to purchase from any other manufacturer.

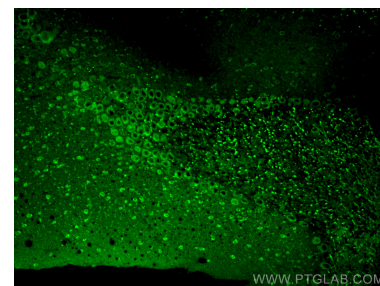
## Selected Validation Data



Various lysates were subjected to SDS PAGE followed by western blot with 31532-1-AP (KLRAQ1 antibody) at dilution of 1:15000 incubated at room temperature for 1.5 hours.



Immunohistochemical analysis of paraffin-embedded human stomach cancer tissue slide using 31532-1-AP (PPP1R21 antibody) at dilution of 1:1000 (under 20x lens). Heat mediated antigen retrieval with Tris-EDTA buffer (pH 9.0).



Immunofluorescent analysis of (4% PFA) fixed paraffin-embedded mouse cerebellum tissue using KLRAQ1 antibody (31532-1-AP) at dilution of 1:400 and Multi-rAb CoraLite® Plus 488-Goat Anti-Rabbit Recombinant Secondary Antibody (H+L) (RGAR002). Heat mediated antigen retrieval with Tris-EDTA buffer (pH 9.0).