

For Research Use Only

# PPP1R21 Polyclonal antibody, PBS Only

Catalog Number: 31532-1-PBS



## Basic Information

**Catalog Number:**

31532-1-PBS

**Size:**

100ug, Concentration: 1 mg/ml by Nanodrop;

**Source:**

Rabbit

**Isotype:**

IgG

**Immunogen Catalog Number:**

AG35449

**GenBank Accession Number:**

BC111059

**GeneID (NCBI):**

129285

**UNIPROT ID:**

Q6ZMI0

**Full Name:**

KLRAQ motif containing 1

**Observed MW:**

88 kDa

**Purification Method:**

Antigen affinity Purification

## Applications

**Tested Applications:**

WB, IHC, IF-P, Indirect ELISA

**Species Specificity:**

human, mouse

## Background Information

PPP1R21, also known as KLRAQ1, CCDC12 and FERRY2, encodes a conserved protein involved in endosomal maturation. It has many isoforms and may play a role in the endosomal sorting process or in the endosome maturation pathway.

## Storage

**Storage:**

Store at -80°C.

**Storage Buffer:**

PBS only, pH7.3

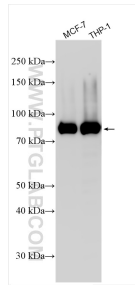
For technical support and original validation data for this product please contact:

T: 1 (888) 4PTGLAB (1-888-478-4522) (toll free in USA), or 1(312) 455-8498 (outside USA)

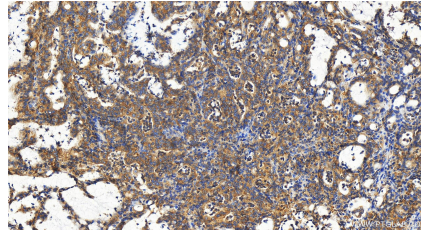
E: [proteintech@ptglab.com](mailto:proteintech@ptglab.com)  
W: [ptglab.com](http://ptglab.com)

This product is exclusively available under Proteintech Group brand and is not available to purchase from any other manufacturer.

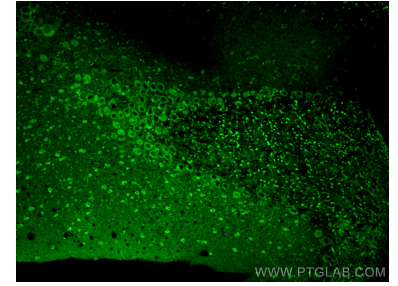
## Selected Validation Data



Various lysates were subjected to SDS PAGE followed by western blot with 31532-1-AP (KLRAQ1 antibody) at dilution of 1:15000 incubated at room temperature for 1.5 hours. This data was developed using the same antibody clone with 31532-1-PBS in a different storage buffer formulation.



Immunohistochemical analysis of paraffin-embedded human stomach cancer tissue slide using 31532-1-AP (PPP1R21 antibody) at dilution of 1:1000 (under 20x lens). Heat mediated antigen retrieval with Tris-EDTA buffer (pH 9.0). This data was developed using the same antibody clone with 31532-1-PBS in a different storage buffer formulation.



Immunofluorescent analysis of (4% PFA) fixed paraffin-embedded mouse cerebellum tissue using KLRAQ1 antibody (31532-1-AP) at dilution of 1:400 and Multi-rAb CoraLite® Plus 488-Goat Anti-Rabbit Recombinant Secondary Antibody (H+L) (RGAR002). Heat mediated antigen retrieval with Tris-EDTA buffer (pH 9.0). This data was developed using the same antibody clone with 31532-1-PBS in a different storage buffer formulation.