

For Research Use Only

L1CAM/CD171 Polyclonal antibody

Catalog Number: 31534-1-AP



Basic Information

Catalog Number: 31534-1-AP	GenBank Accession Number: BC126229	Purification Method: Antigen affinity Purification
Size: 150ul , Concentration: 500 µg/ml by Nanodrop;	GeneID (NCBI): 3897	Recommended Dilutions: WB 1:1000-1:6000 IF/ICC 1:50-1:500
Source: Rabbit	UNIPROT ID: P32004	
Isotype: IgG	Full Name: L1 cell adhesion molecule	
Immunogen Catalog Number: EG0209	Calculated MW: 1257 aa, 140 kDa	
	Observed MW: 200-220 kDa	

Applications

Tested Applications: WB, IF/ICC, ELISA	Positive Controls:
Species Specificity: human	WB : mouse brain tissue, rat brain tissue IF/ICC : HeLa cells,

Background Information

L1CAM, also known as NCAM-L1 or CD171, is a cell adhesion molecule of the immunoglobulin superfamily. It is a 200-220 kDa transmembrane glycoprotein composed of six Ig-like domains and five fibronectin type III repeats followed by a transmembrane region and a highly conserved cytoplasmic tail (PMID: 3412448; 22796939). L1CAM is primarily expressed in the nervous system and is involved in neuron-neuron adhesion, neurite fasciculation, outgrowth of neurites, cerebellar granule cell migration, neurite outgrowth on Schwann cells and interactions among epithelial cells of intestinal crypts (PMID: 3412448; 10767310). L1CAM is overexpressed in many human cancers and is often associated with bad prognosis (PMID: 27267927; 26111503). It has been reported that L1CAM can be proteolytically cleaved into a soluble fragment of 140 kDa and an intracellular fragment of 80-85 kDa (PMID: 30842511; 34380733). This antibody was raised against 20-1120 aa of human L1CAM.

Storage

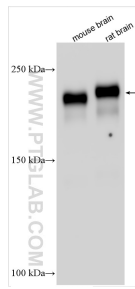
Storage:
Store at -20°C. Stable for one year after shipment.
Storage Buffer:
PBS with 0.02% sodium azide and 50% glycerol, pH7.3
Aliquoting is unnecessary for -20°C storage

*** 20ul sizes contain 0.1% BSA

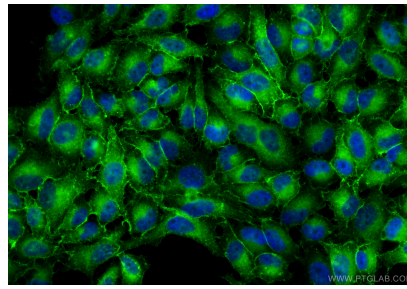
For technical support and original validation data for this product please contact:
T: 1 (888) 4PTGLAB (1-888-478-4522) (toll free in USA), or 1(312) 455-8498 (outside USA)
E: proteintech@ptglab.com
W: ptglab.com

This product is exclusively available under Proteintech Group brand and is not available to purchase from any other manufacturer.

Selected Validation Data



Various lysates were subjected to SDS PAGE followed by western blot with 31534-1-AP (L1CAM antibody) at dilution of 1:3000 incubated at room temperature for 1.5 hours.



Immunofluorescent analysis of (4% PFA) fixed HeLa cells using L1CAM antibody (31534-1-AP) at dilution of 1:200 and CoraLite®488-Conjugated Goat Anti-Rabbit IgG(H+L) (SA00013-2).