

For Research Use Only

PPEF2 Polyclonal antibody

Catalog Number: 31543-1-AP



Basic Information

Catalog Number:

31543-1-AP

Size:

150ul, Concentration: 450 ug/ml by Nanodrop;

Source:

Rabbit

Isotype:

IgG

Immunogen Catalog Number:

AG35922

GenBank Accession Number:

NM_006239

GeneID (NCBI):

5470

UNIPROT ID:

O14830

Full Name:

protein phosphatase, EF-hand calcium binding domain 2

Calculated MW:

86kDa

Observed MW:

69 kDa

Purification Method:

Antigen affinity Purification

Recommended Dilutions:

WB 1:500-1:1000

Applications

Tested Applications:

WB, ELISA

Species Specificity:

human, mouse, rat

Positive Controls:

WB : mouse kidney tissue, rat kidney tissue

Background Information

Protein phosphatase with EF-hand domain 2 (PPEF2), also known as PPP7CB, is a member of the serine/threonine protein phosphatase with EF-hand motif family. PPEF2 can dephosphorylate ubiquitin and suppress PINK1-dependent mitophagy. PPEF2 functions to suppress mitochondrial quality control on a cellular level through dephosphorylation of p-S65 ubiquitin. PPEF2 exists 2 isoforms produced by alternative splicing with a molecular weight of 86 kDa (PPEF-2(L)) and 69 kDa (PPEF-2(S)).

Storage

Storage:

Store at -20°C. Stable for one year after shipment.

Storage Buffer:

PBS with 0.02% sodium azide and 50% glycerol pH 7.3.

Aliquoting is unnecessary for -20°C storage

*** 20ul sizes contain 0.1% BSA

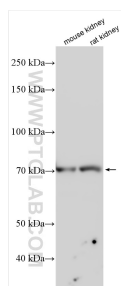
For technical support and original validation data for this product please contact:

T: 1 (888) 4PTGLAB (1-888-478-4522) (toll free in USA), or 1(312) 455-8498 (outside USA)

E: proteintech@ptglab.com
W: ptglab.com

This product is exclusively available under Proteintech Group brand and is not available to purchase from any other manufacturer.

Selected Validation Data



Various lysates were subjected to SDS PAGE followed by western blot with 31543-1-AP (PPEF2 antibody) at dilution of 1:600 incubated at room temperature for 1.5 hours.